

MID-WESTERN REGIONAL COUNCIL STUBBO SOLAR FARM ACCESS ROAD DETAILED DESIGN BLUE SPRINGS ROAD

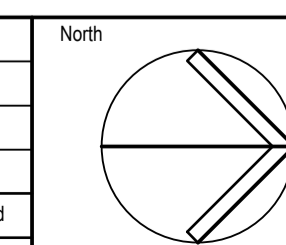


CONSTRUCTION ISSUE

© COPYRIGHT of this design and plan is the property of ACOR Consultants Pty Ltd, ACN 079 306 246 ABN 40 079 306 246, all rights reserved.
It must not be used, modified, reproduced or copied wholly or in part without written permission from ACOR Consultants Pty Ltd.

This drawing has been assigned an electronic code that signifies the drawing has been checked and approved by:

| Issue | Description | Date | Drawn | Approved |
|-------|-------------------------|----------|-------|----------|
| 02 | ISSUED FOR CONSTRUCTION | 20.07.22 | MDM | GPC |
| 01 | ISSUED FOR CONSTRUCTION | 06.07.22 | MDM | GPC |



Client
UPCIAC RENEWABLES AUSTRALIA
Suite 2, Level 2, 15 Castray Esplanade
Battery Point, TAS, 7004



ENGINEERS | MANAGERS | INFRASTRUCTURE PLANNERS | DEVELOPMENT CONSULTANTS

ACOR Consultants Pty Ltd
Level 1, 54 Union Street
Cooks Hill, Newcastle NSW 2300
T +61 2 4926 4811

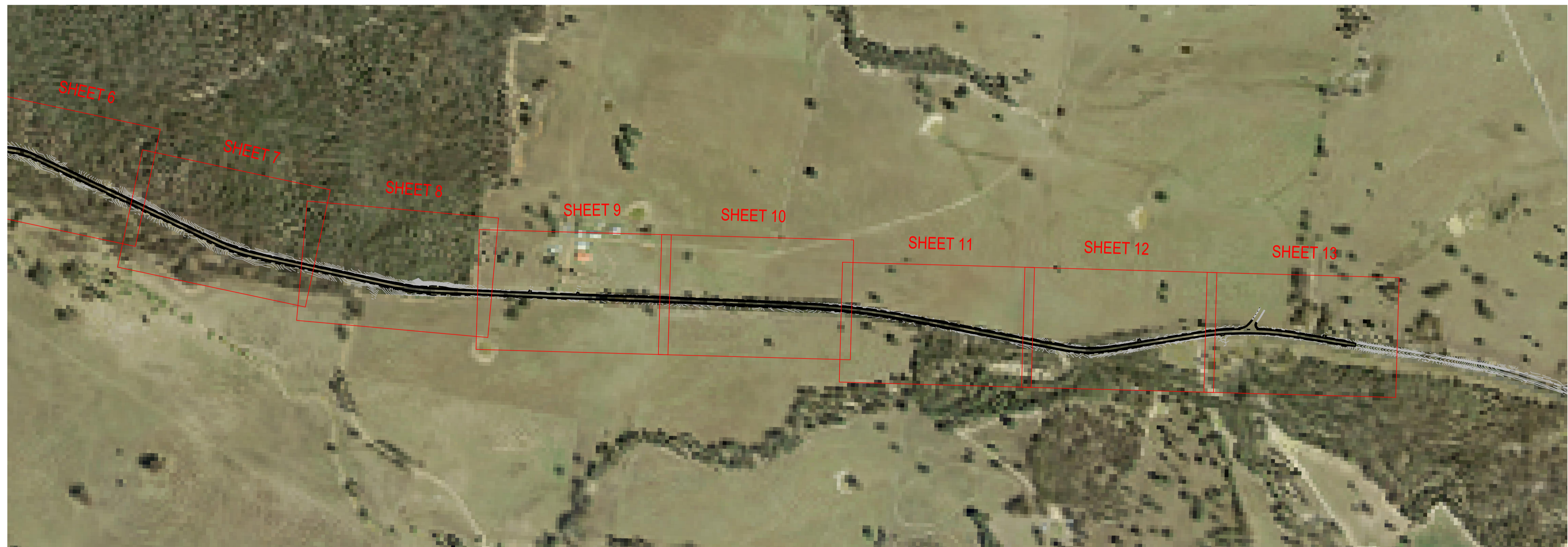
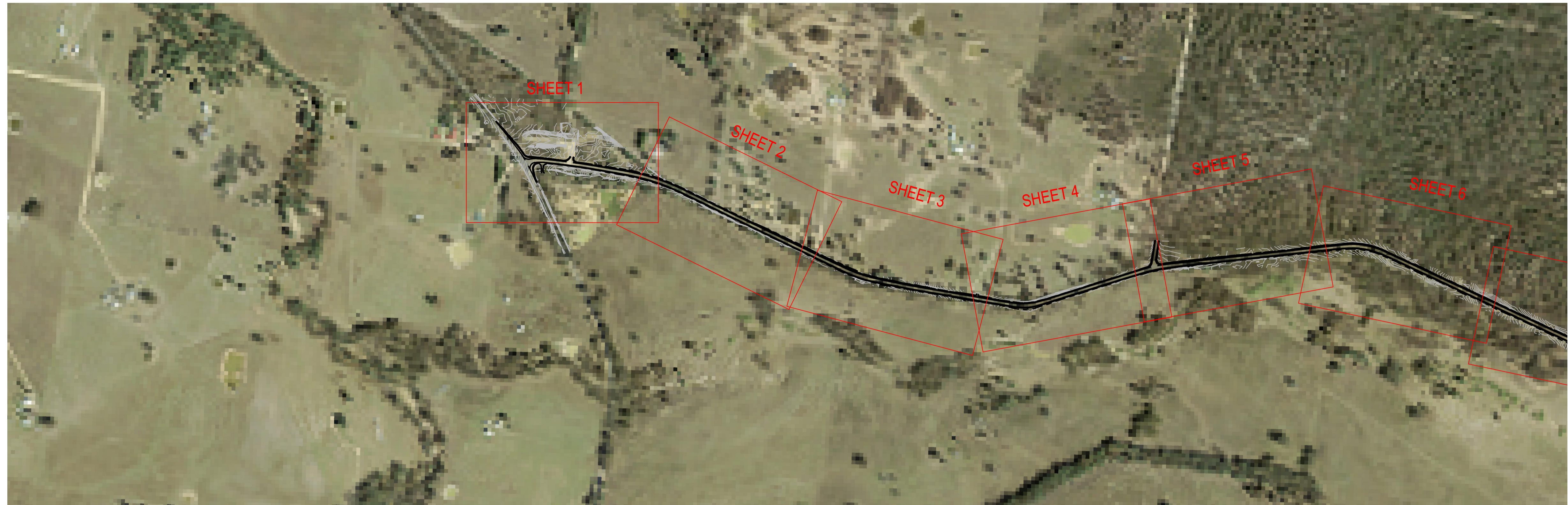


Project
**STUBBO SOLAR FARM ACCESS ROAD
BLUE SPRINGS ROAD, STUBBO**

Drawing Title
COVER SHEET AND LOCALITY PLAN

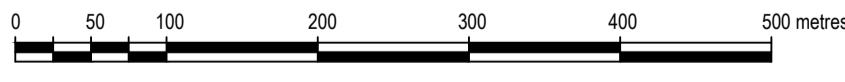
| Drawn | Date | Scale | A1 | G.A. Check | Date |
|----------|-------------|----------|-------|------------|----------|
| MDM | April 22 | N.T.S. | | GPC | 20.07.22 |
| Designed | Project No. | Dwg. No. | Issue | | |
| GGC | NSW212453 | C101-001 | 02 | | |

18/07/2022 11:00am



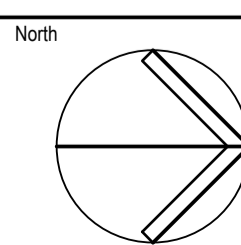
KEY PLAN
SCALE 1:5000

SCALE 1:5000 @ A1
SCALE 1:10000 @ A3



© COPYRIGHT of this design and plan is the property of ACOR Consultants Pty Ltd, ACN 079 306 246 ABN 40 079 306 246, all rights reserved.
It must not be used, modified, reproduced or copied wholly or in part without written permission from ACOR Consultants Pty Ltd.

| Issue | Description | Date | Drawn | Approved |
|-------|-------------------------|----------|-------|----------|
| 02 | ISSUED FOR CONSTRUCTION | 20.07.22 | MDM | GPC |
| 01 | ISSUED FOR CONSTRUCTION | 06.07.22 | MDM | GPC |



Client
UPCIAC RENEWABLES AUSTRALIA
Suite 2, Level 2, 15 Castray Esplanade
Battery Point, TAS, 7004



ACOR CONSULTANTS
ENGINEERS | MANAGERS | INFRASTRUCTURE PLANNERS | DEVELOPMENT CONSULTANTS

ACOR Consultants Pty Ltd
Level 1, 54 Union Street
Cooks Hill, Newcastle NSW 2300
T +61 2 4926 4811

Project
**STUBBO SOLAR FARM ACCESS ROAD
BLUE SPRINGS ROAD, STUBBO**

| Drawing Title | | KEY PLAN | |
|---------------|-------------|------------|----------|
| Drawn | Date | Scale | A1 |
| MDM | April 22 | 1:7500 | |
| Designed | Project No. | G.A. Check | Date |
| GGC | NSW212453 | GPC | 20.07.22 |
| | | Dwg. No. | Issue |
| | | C101-201 | 02 |



CONSTRUCTION ISSUE

18/07/2022 11:00am