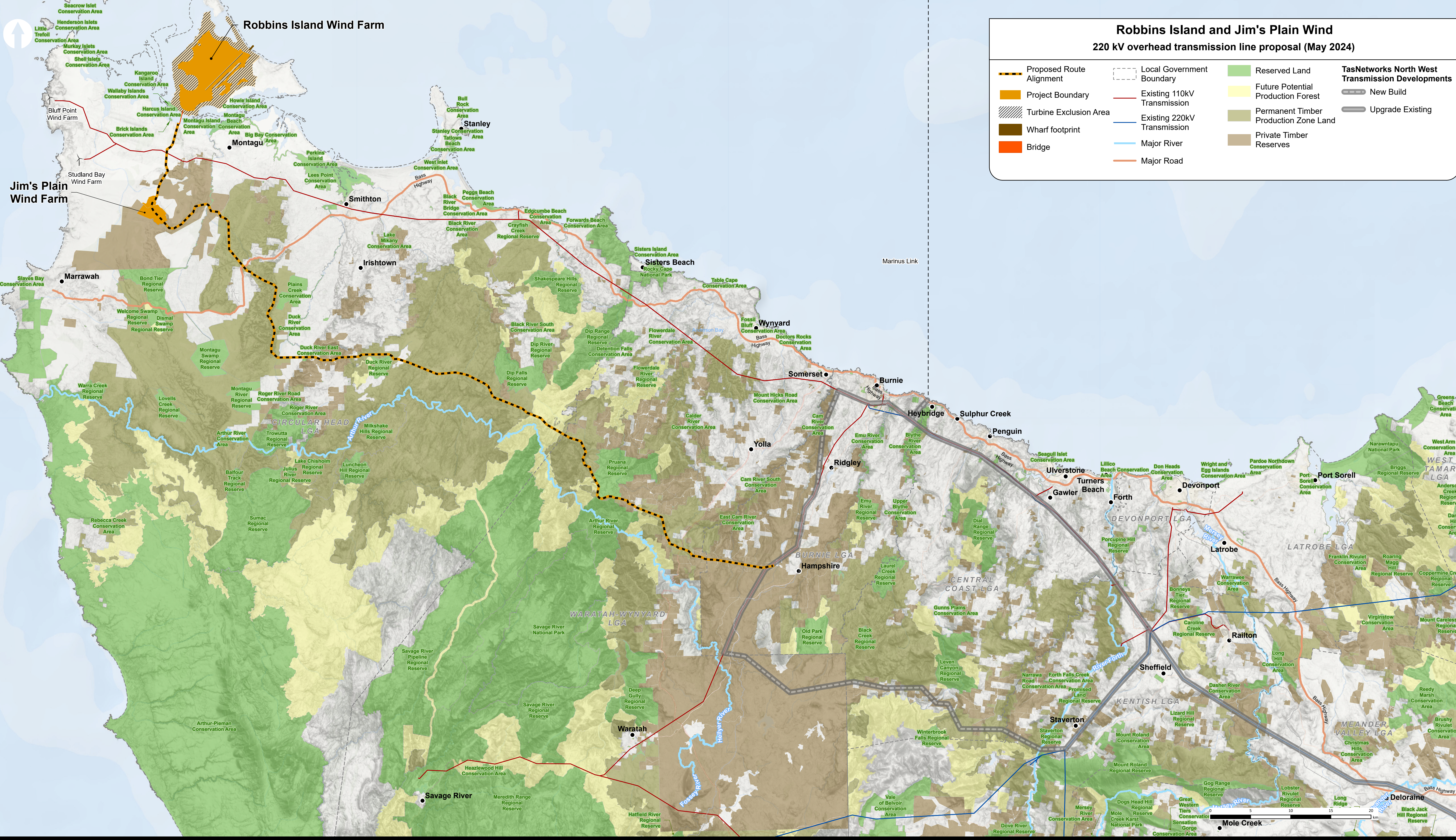
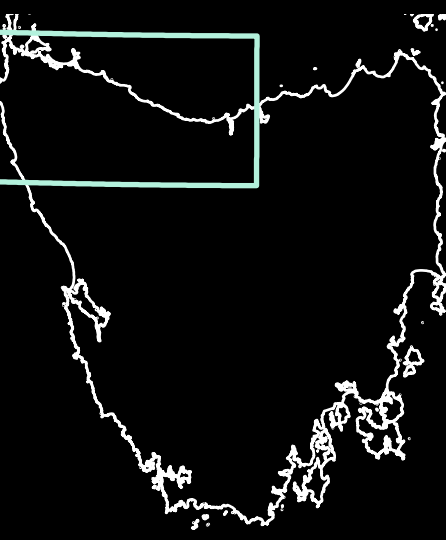


# Robbins Island & Jim's Plain Wind

Renewable Energy from ACEN



### Robbins Island and Jim's Plain Wind

#### 220 kV overhead transmission line proposal (May 2024)

Proposed Route Alignment	Local Government Boundary	Reserved Land	<b>TasNetworks North West Transmission Developments</b>
Project Boundary	Existing 110kV Transmission	Future Potential Production Forest	
Turbine Exclusion Area	Existing 220kV Transmission	Permanent Timber Production Zone Land	New Build
Wharf footprint	Major River	Private Timber Reserves	Upgrade Existing
Bridge	Major Road		