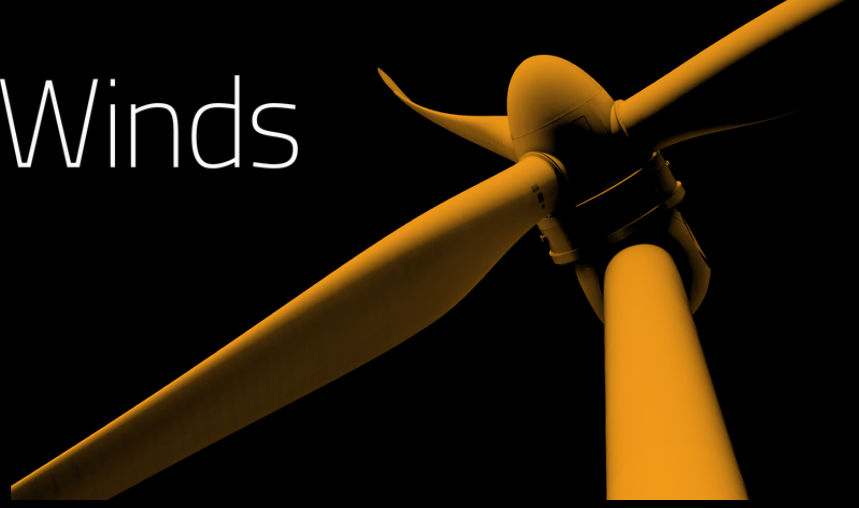


# Valley of the Winds

Renewable Energy from ACEN



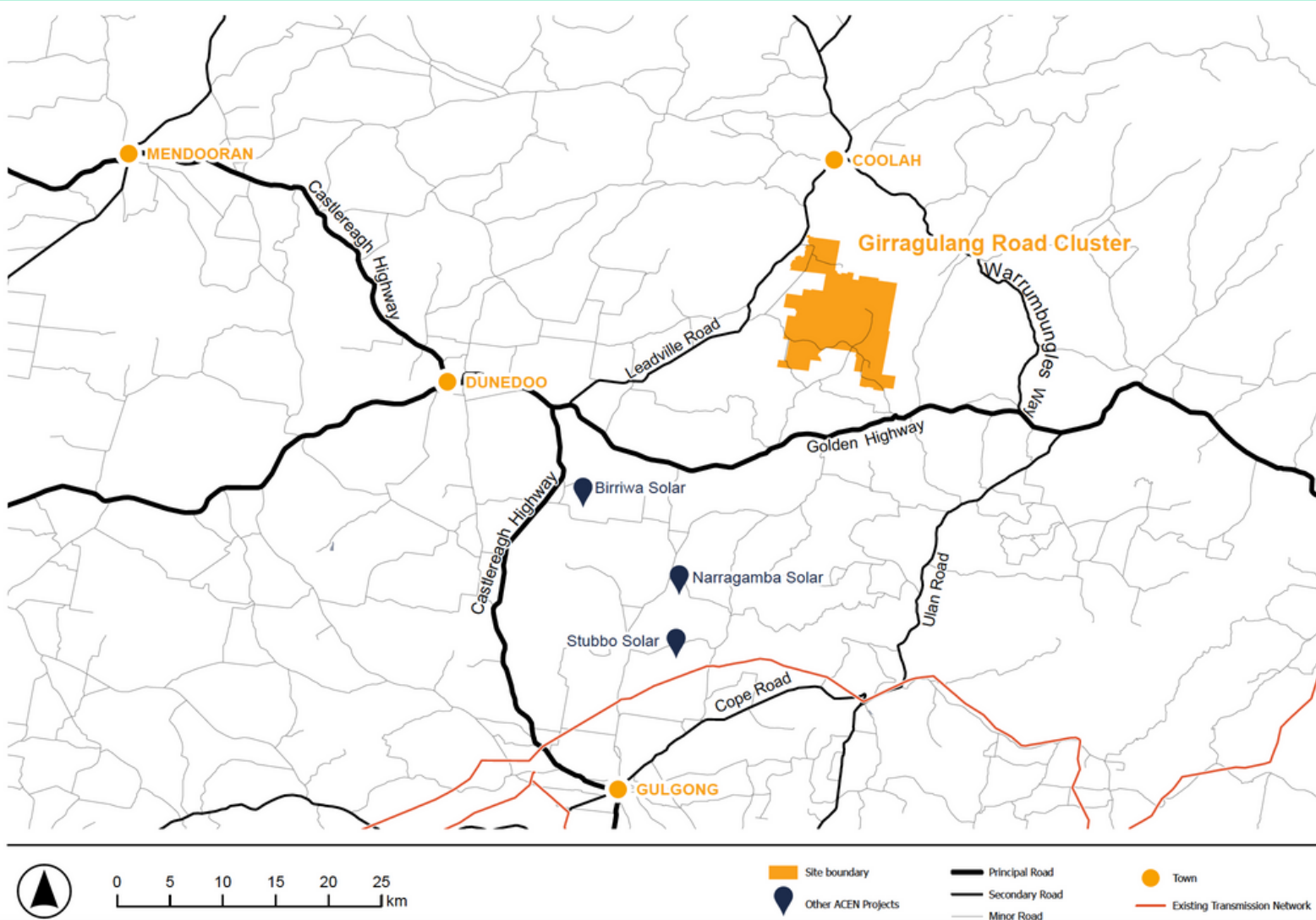
## Project layout

### Girragulang Road Cluster

Girragulang Road cluster is located south of Coolah and north of the Golden Highway.

The cluster contains **45 turbines**, internal access tracks, the central substation for the project as well as underground electrical reticulation connecting the turbines to the substation. Overhead transmission from this cluster exports the electricity from the central substation via the CWO-REZ infrastructure.

Access will either be via Short Street within the Uarby township, or via the Golden Highway through private property.



[www.valleyofthewinds.com.au](http://www.valleyofthewinds.com.au)



[info@valleyofthewinds.com.au](mailto:info@valleyofthewinds.com.au)

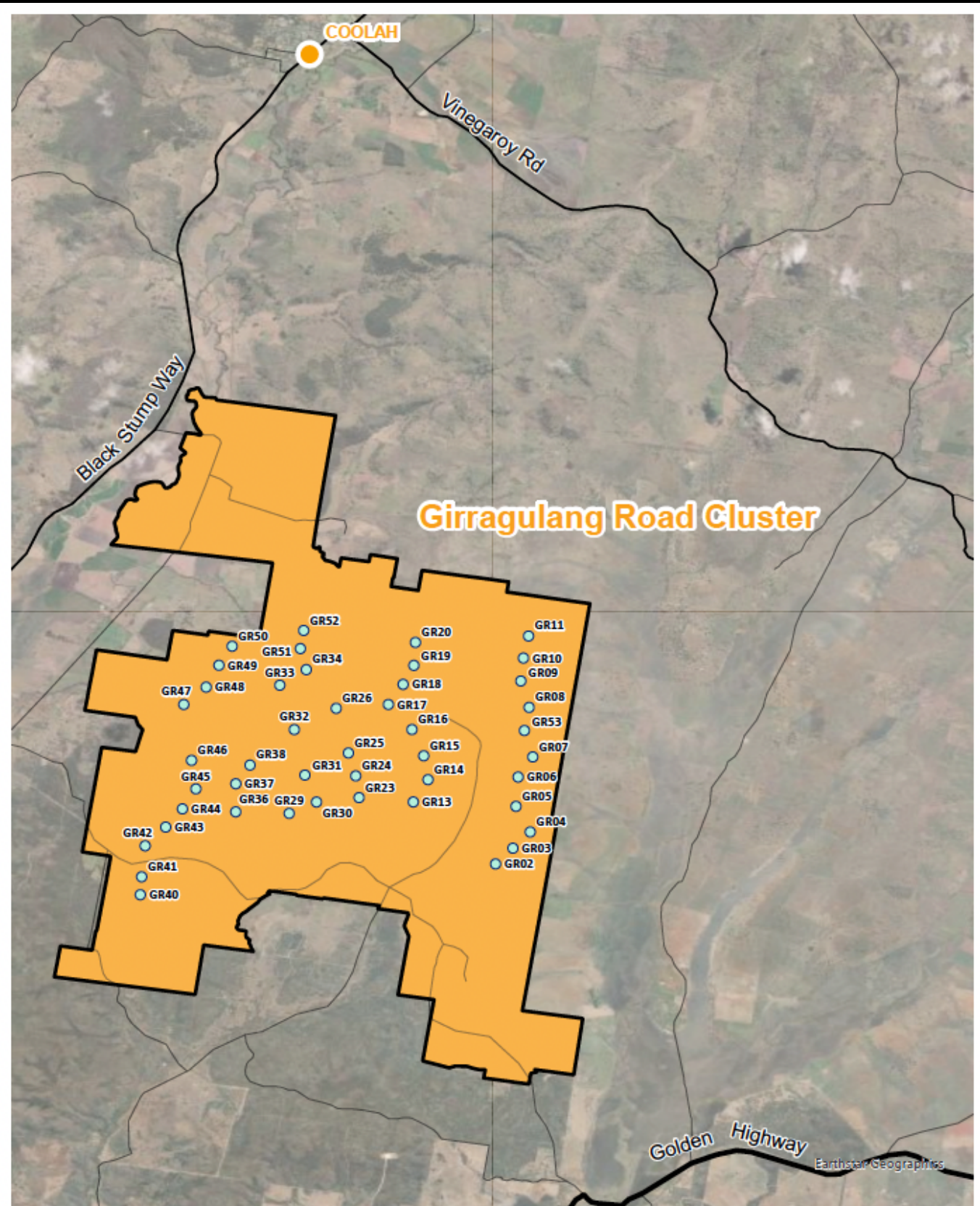


1800 570 847



**ACEN** Australia

# Girragulang Road Cluster



0 5 km

Site Boundary

Wind Turbine

Principal Road

Secondary Road

Minor Road



[www.valleyofthewinds.com.au](http://www.valleyofthewinds.com.au)



[info@valleyofthewinds.com.au](mailto:info@valleyofthewinds.com.au)



1800 570 847



ACEN Australia