

# Valley of the Winds

Renewable Energy from ACEN

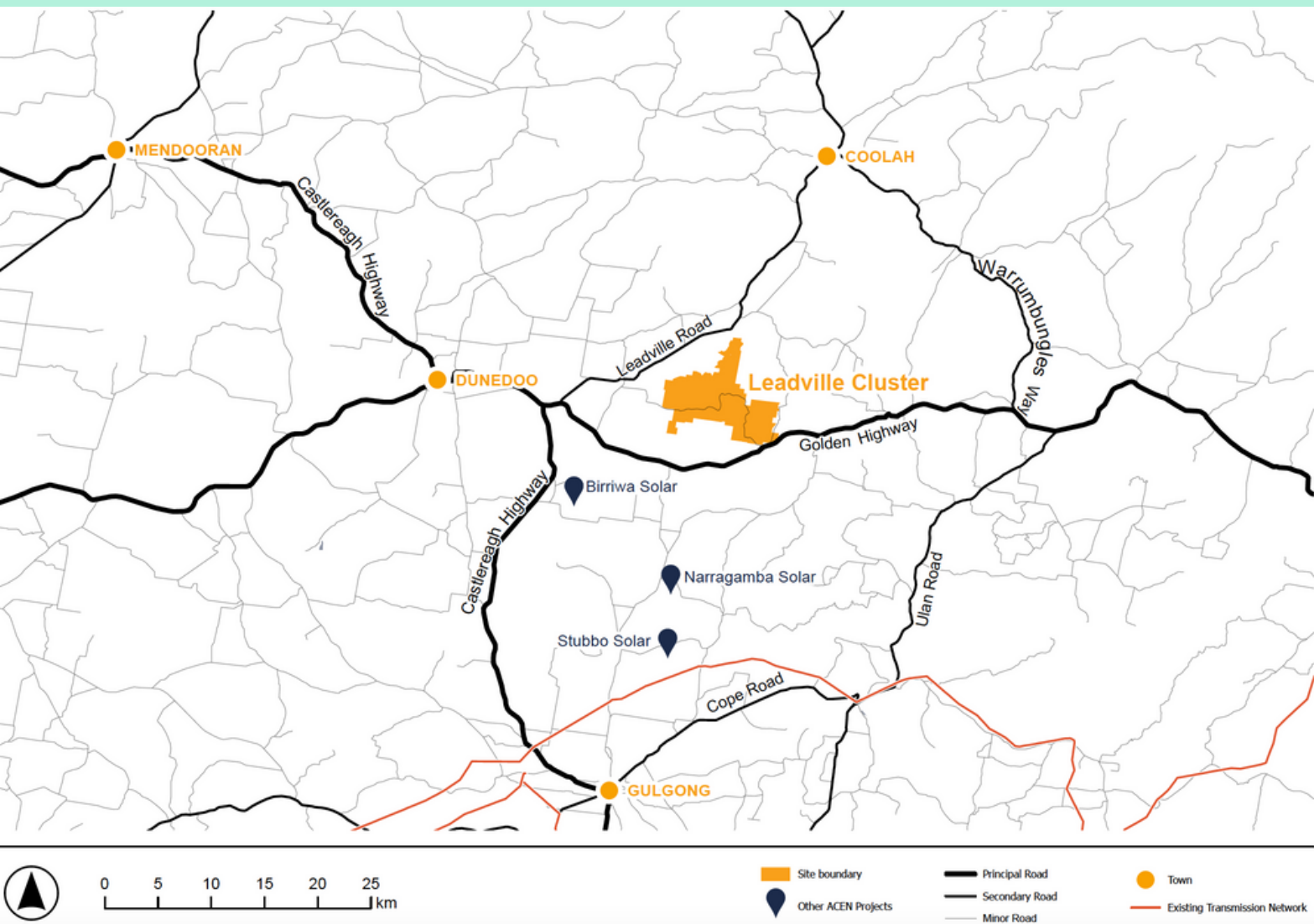
## Project layout

### Leadville Cluster

The Leadville cluster is the southernmost cluster, closest to Leadville.

The cluster contains **21 turbines**, access tracks and underground electrical reticulation connecting the turbines to the collector substation within the cluster. Overhead transmission lines will export the electricity from the substation via the CWO-REZ infrastructure.

This cluster will be accessed via a new access point on the Golden Highway.



[www.valleyofthewinds.com.au](http://www.valleyofthewinds.com.au)



[info@valleyofthewinds.com.au](mailto:info@valleyofthewinds.com.au)



1800 570 847



**ACEN** Australia

# Leadville Cluster

