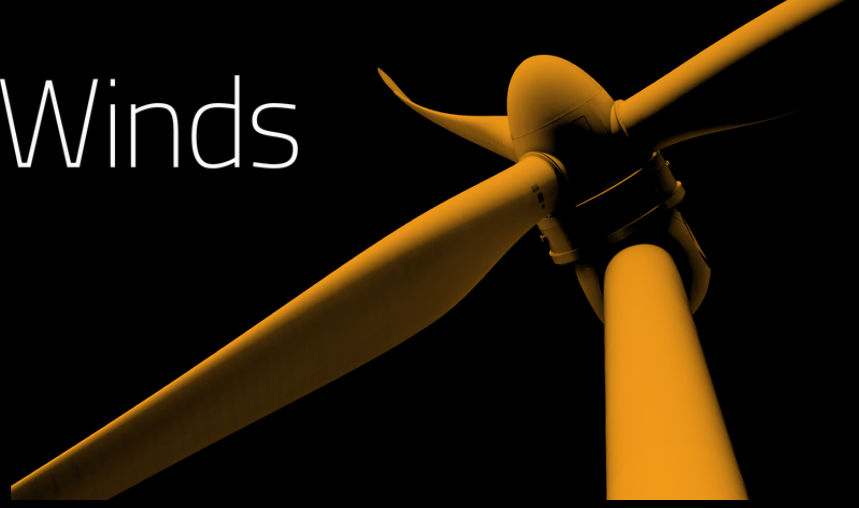


Valley of the Winds

Renewable Energy from ACEN



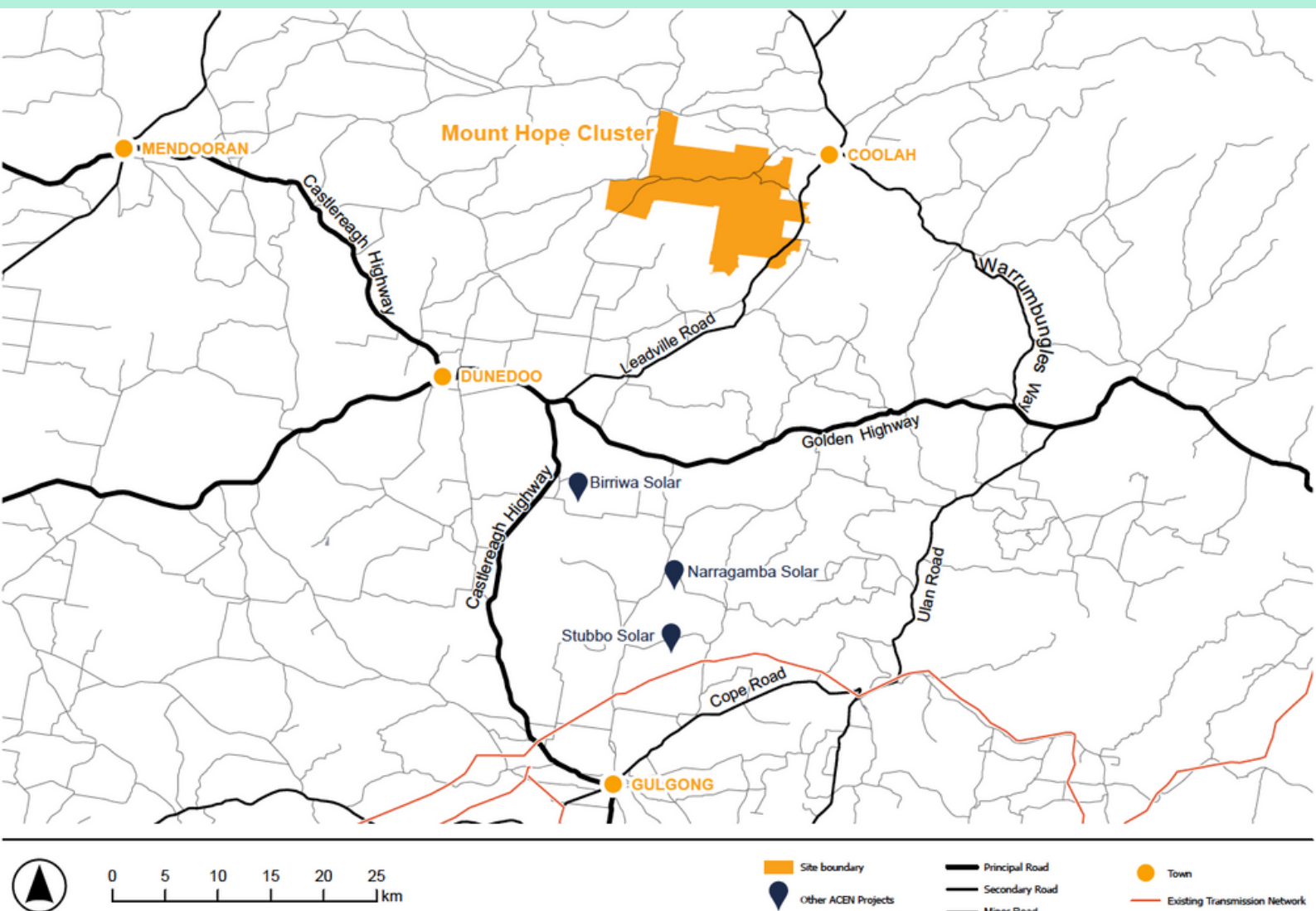
Project layout

Mount Hope Cluster

The Mount Hope cluster is the northern most cluster, closest to Coolah.

The cluster contains **65 turbines**, two collector substation, underground electrical reticulation and access tracks. This cluster contains overhead transmission lines dispatching electricity to the central substation located in the Girragulang cluster.

Access would be via Black Stump Way, south of Coolah.



www.valleyofthewinds.com.au



info@valleyofthewinds.com.au

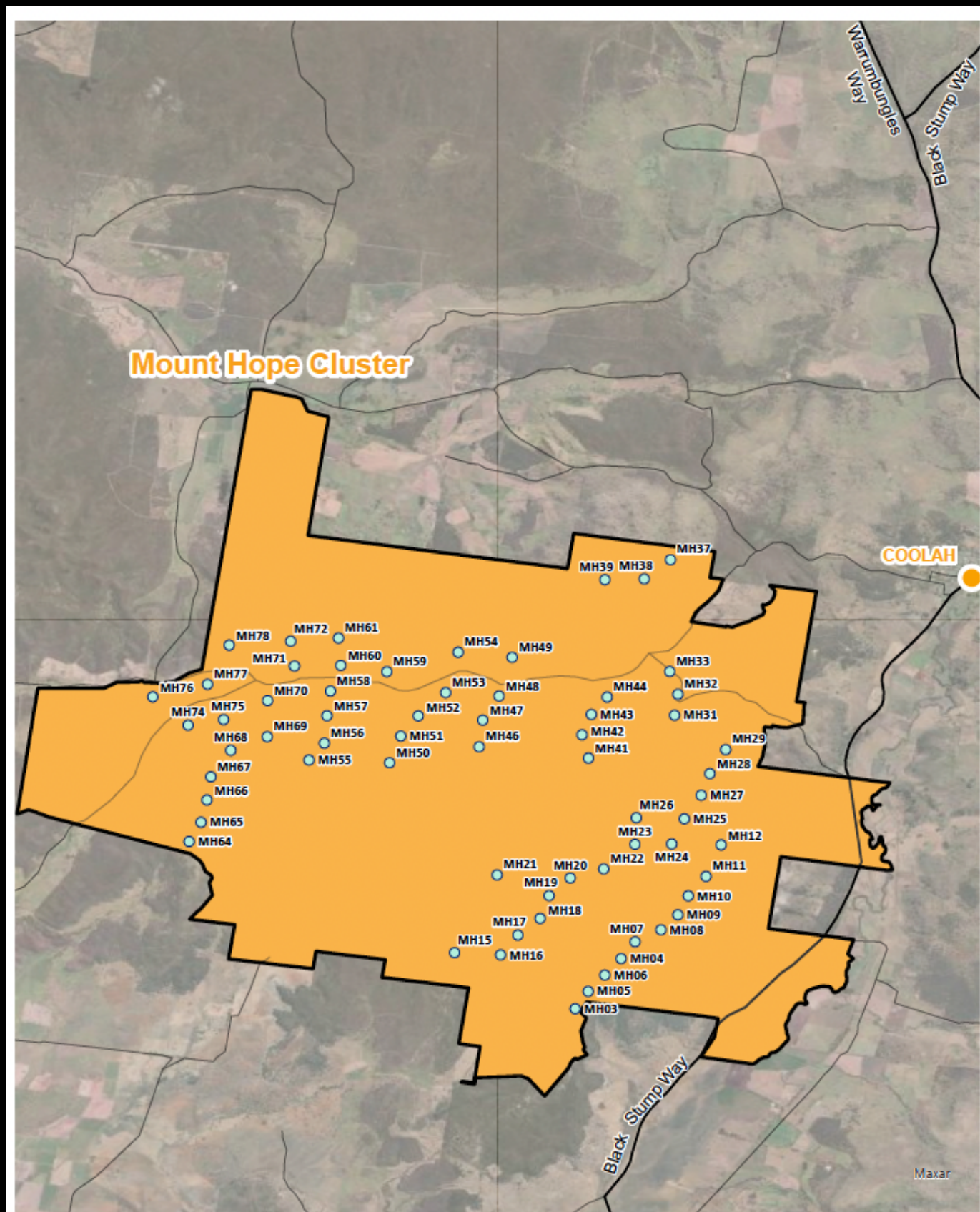


1800 570 847



ACEN Australia

Mount Hope Cluster



0 5 km

- Wind Turbine
- Site Boundary
- Secondary Road
- Minor Road