

Fact sheet

February 2020 | www.valleyofthewinds.com.au



Harnessing nature's energy to power the future

Valley of the Winds is a proposed 800-megawatt wind farm situated south of the township of Coolah within the Warrumbungle Shire, extending towards the Golden Highway.

UPC/AC Renewables Australia acknowledges the Kamilaroi and Wiradjuri peoples as the traditional owners of the land on which the project is proposed. The name Coolah is derived from their traditional language – meaning Valley of the Winds.

The undulating terrain in the region will allow for wind turbines to be located on ridgelines within cleared land that is currently being used for livestock grazing.

The project will be designed to allow cattle and sheep grazing alongside renewable energy production, helping to drought proof local farming operations and grow the local and regional economy.

About the proposal

Up to 175 wind turbines are being considered across three clusters named Mount Hope, Girragulang Road and Leadville, capable of generating 2,500,000 megawatt hours of clean renewable energy each year – enough to power 590,000 typical NSW homes. The wind turbines will be sited on cleared grazing country within private property.



The turbines will have a maximum tip height of 250 metres with underground electricity cabling connecting each turbine to an electricity substation. Gravel access tracks will link the wind turbines and all ancillary infrastructure within private property.

A high voltage transmission line will be required to connect the central substation to the National Electricity Market (NEM)

allowing the electricity generated from Valley of the Winds to provide a secure and reliable supply of electricity to NSW, and beyond. An energy battery storage system is also being considered for the project.

The project is being proposed by UPC/AC Renewables Australia and is in the early planning stage. ■

Project facts



400 construction jobs and 50 full-time jobs over the life of the project



Over \$1 billion of capital investment



Up to 175 wind turbines, electrical substations, transmission lines



Potential for a battery storage system



Capable of producing 2,500,000 megawatt hours of clean renewable energy



Enough to power 590,000 homes and deliver two million tonnes of annual CO2 reduction

Project benefits



Work opportunities for local workers, businesses and suppliers



Agricultural production to continue on site



Development of community benefit sharing program



Replacing generation from ageing coal fired power stations in NSW



Help meet state and federal emission reduction targets and international climate change obligations

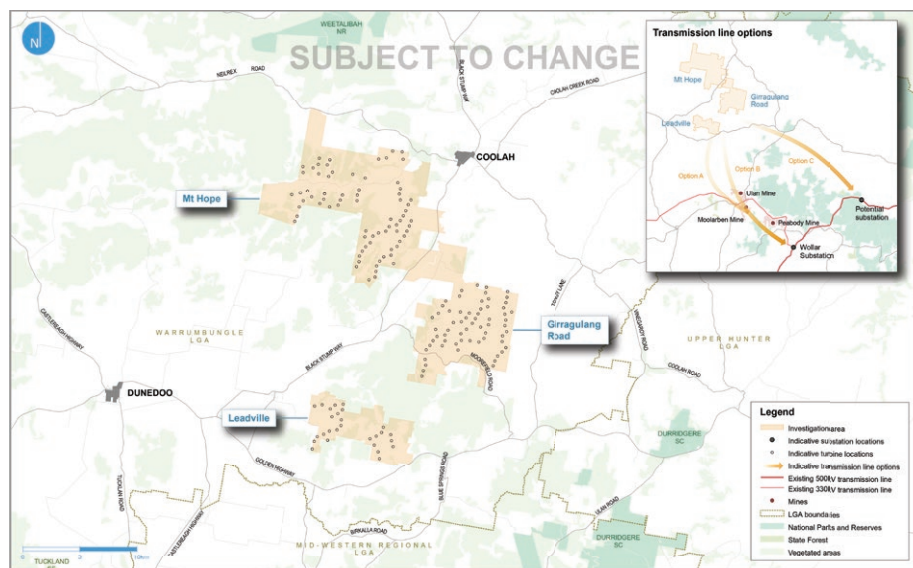


Downward pressure on wholesale electricity prices

Project site

The project site is situated in the Warrumbungle Shire between the rural township of Coolah and the Golden Highway. The project site consists of mostly cleared grazing land spanning rocky outcrops and gently sloping ridge lines.

The region was recently identified as the Central West Renewable Energy Zone by the NSW Government and was described as an ideal location for renewable energy generation by the Australian Energy Market Operator. ■



RAMBOLL

UPC AC Renewables

Valley of the Winds

Valley of the Winds Concept Plan
11 February 2020
Subject to change

Transmission link

High voltage transmission networks are an essential link in the safe and reliable supply of electricity to homes and businesses throughout Australia. Transmission lines transport electricity from generators to substations that then reduce the electricity voltage to an appropriate level for distribution to homes and businesses throughout the state.

As part of our proposal, we are investigating options to link the wind farm with the

electricity network via a 500kV transmission line. The transmission line will run from a substation within the wind farm boundary, to the existing 500kV transmission line.

We are committed to working closely with landowners and their neighbours on the location of easements and wherever possible the design and structure of the transmission infrastructure. ■



Wind power technology

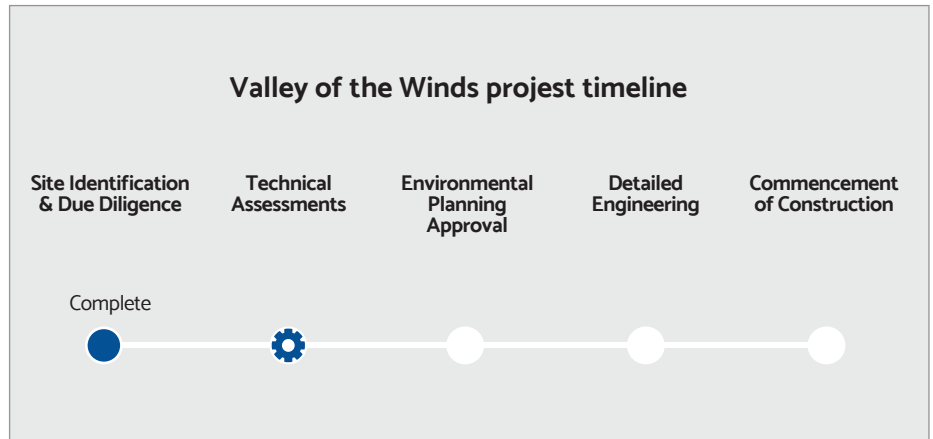
Electricity is generated by highly aerodynamic wind turbine blades being propelled by the natural power of the wind. The blades rotate a central drive shaft which is geared and feeds into an electrical generator within the turbine nacelle. This action produces electricity, which is transported via electrical cables to the national grid to be used by homes and businesses.

Wind energy investment is now more than \$8 billion in Australia, helping to create about 5,000 jobs. ■

Planning process

Valley of the Winds is in the early stage of planning. It will be assessed as a State Significant Development under Part 4 of the NSW Environmental Planning and Assessment Act 1979 (the Act).

The NSW Department of Planning, Industry and Environment (DPIE) is the state planning authority for the project. The Act requires a preliminary scoping report to be prepared and submitted to DPIE, before it issues the Secretary's Environmental Assessment Requirements (SEAR's). A range of assessments will be carried out in line with these requirements, together making up the Environmental Impact Statement (EIS) for the project.



Approval will also be required from the Commonwealth through the Environmental Protection and Biodiversity Conservation Act (EPBC Act).

Prior to the project being approved the EIS will be made public, allowing for submissions to be made by members of the community. ■

Community consultation

Throughout the development of the project UPVAC Renewables Australia will be working closely with the host landowners, their neighbours and the wider community to help us gain a detailed understanding of views, issues, feedback and comments on the project.

This includes the local council, their elected representatives, Members of Parliament and State and Federal Government agencies. We will also be consulting with representatives of the traditional indigenous owners of the land to help us understand, manage and protect any cultural areas or items of significance across the project site.

There will be a number of community information drop-in sessions, one on one meetings and letter box drops to help provide information on the project throughout its development. We will also provide regular online project updates to help provide an open and two-way conversation about the project. ■



Contact us

Members of the local community can provide feedback or ask questions via our website or by email.

www.valleyofthewinds.com.au

email: votw@upc-ac.com