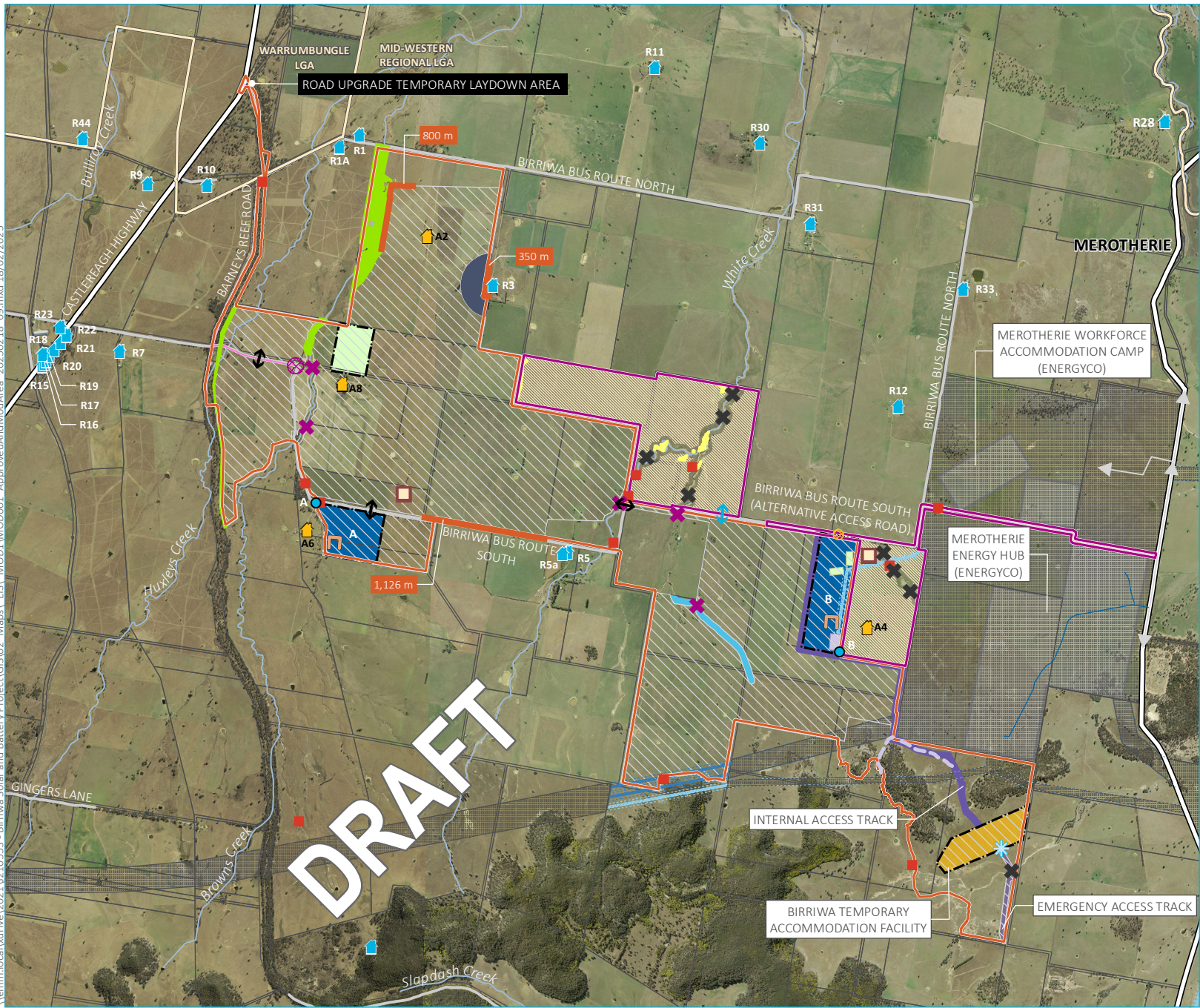


\\emm.local\drive\2021\12\10553 - Birriwa Solar and Battery Project\GIS\02 - Maps\ EIS\ MOD1\MOD001 - ApprovedAndModArea\_20250218\_09.mxd 18/02/2025



- KEY**
- Approved project layout**
- Project area
  - Development footprint
  - Restricted development area
  - Road upgrade corridor
  - Vegetation to be retained
  - Potential creek crossing point
  - Potential public road crossing location
  - Connection point (option A or B)
  - Indicative noise wall location
  - Solar panel setback
  - Landscape screen planting
  - Project access point
  - Emergency access point
  - Proposed operational infrastructure area including substation, operational facility and BESS (option A or B)
  - Birriwa temporary accommodation facility
  - Temporary construction compound
- Modification project layout**
- Modification area
  - Modification development footprint
  - Vegetation to be retained
  - Secondary access point
  - Internal access track
  - Potential creek crossing point
  - Potential public road crossing location
- EnergyCo infrastructure**
- 500 kV transmission line
  - 330 kV transmission line
  - Permanent access easement
  - Access in/out
  - Access road
  - Brake and winch site
  - 330 kV switching station
  - Indicative construction easement (adjacent property)
  - Merotherie Energy Hub and workforce accommodation camp
- Existing environment**
- Dwelling not associated with the project
  - Dwelling associated with the project
  - Aboriginal heritage site (to be salvaged)
  - Aboriginal heritage site (to be avoided)
  - Local government area boundary
  - Major road
  - Minor road

The approved project and the modification area

Birriwa Solar and BESS Project - Modification  
Figure 3.1



Source: EMM (2025); DCSSS (2024); DFSI (2017, 2023, 2024); GA (2011); EnergyCo (2024); ACEN (2024); OzArk (2025)

