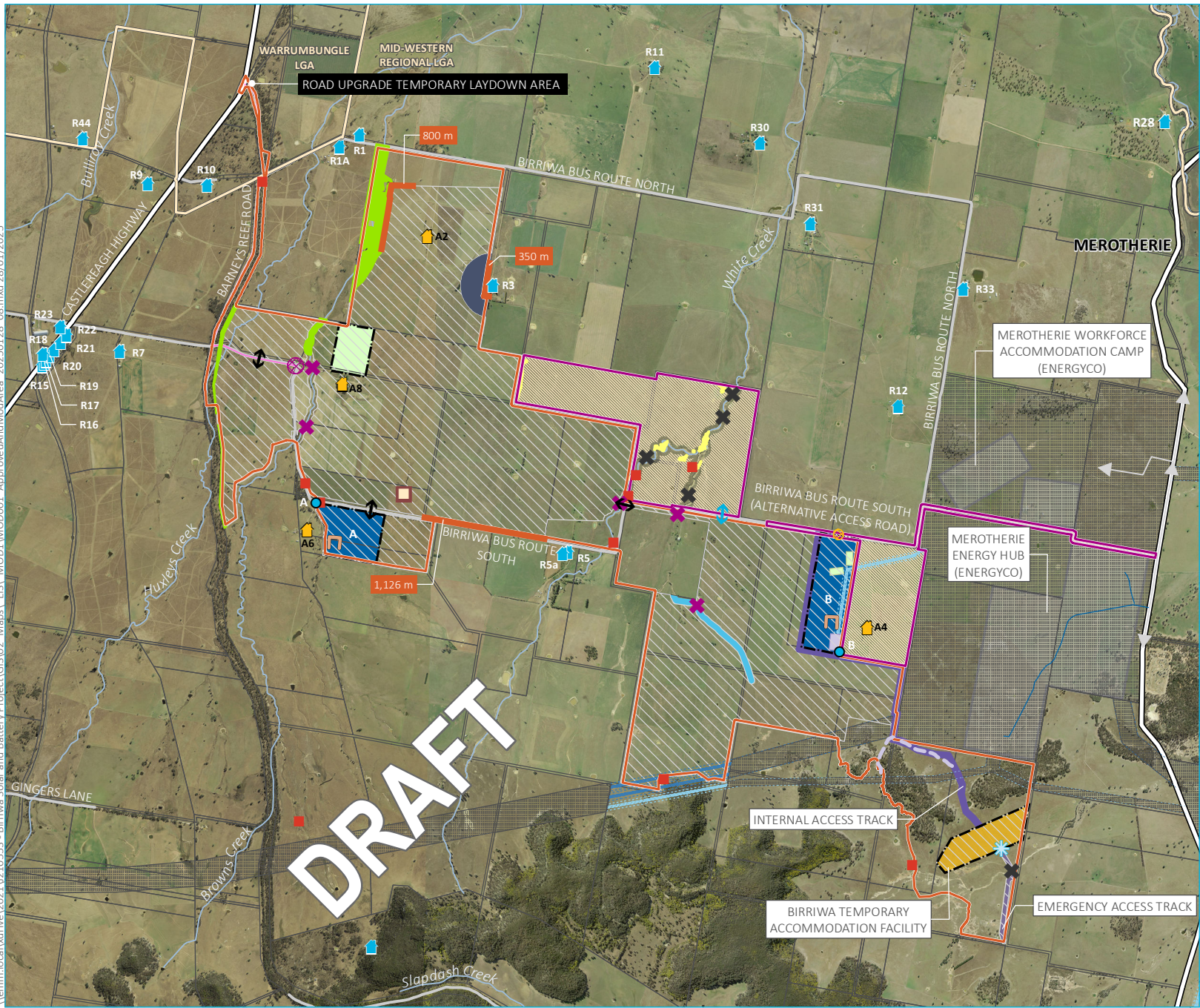


\\emm.local\drive\2021\12\10553 - Birriwa Solar and Battery Project\GIS\02 - Maps\ EIS\ MOD1\MOD001 - ApprovedAndModArea\_20250128\_08.mxd 28/01/2025



- KEY**
- Approved project layout**
    - Project area
    - Development footprint
    - Restricted development area
    - Road upgrade corridor
    - Vegetation to be retained
    - Potential creek crossing point
    - Potential public road crossing location
    - Connection point (option A or B)
    - Indicative noise wall location
    - Solar panel setback
    - Landscape screen planting
    - Project access point
    - Emergency access point
    - Proposed operational infrastructure area including substation, operational facility and BESS (option A or B)
    - Birriwa temporary accommodation facility
    - Temporary construction compound
  - Modification project layout**
    - Modification area
    - Modification development footprint
    - Vegetation to be retained
    - Secondary access point
    - Internal access track
    - Potential creek crossing point
    - Potential public road crossing location
  - EnergyCo infrastructure**
    - 500 kV transmission line
    - 330 kV transmission line
    - Permanent access easement
    - Access in/out
    - Access road
    - Brake and winch site
    - 330 kV switching station
    - Indicative construction easement (adjacent property)
    - Merotherie Energy Hub and workforce accommodation camp
  - Existing environment**
    - Dwelling not associated with the project
    - Dwelling associated with the project
    - Aboriginal heritage site (to be salvaged)
    - Aboriginal heritage site (to be avoided)
    - Local government area boundary
    - Major road
    - Minor road

**DRAFT**

The approved project and the modification area

Birriwa Solar and BESS Project - Modification  
Figure 3.1



Source: EMM (2025); DCSSS (2024); DFSI (2017, 2023, 2024); GA (2011); EnergyCo (2024); ACEN (2024)

