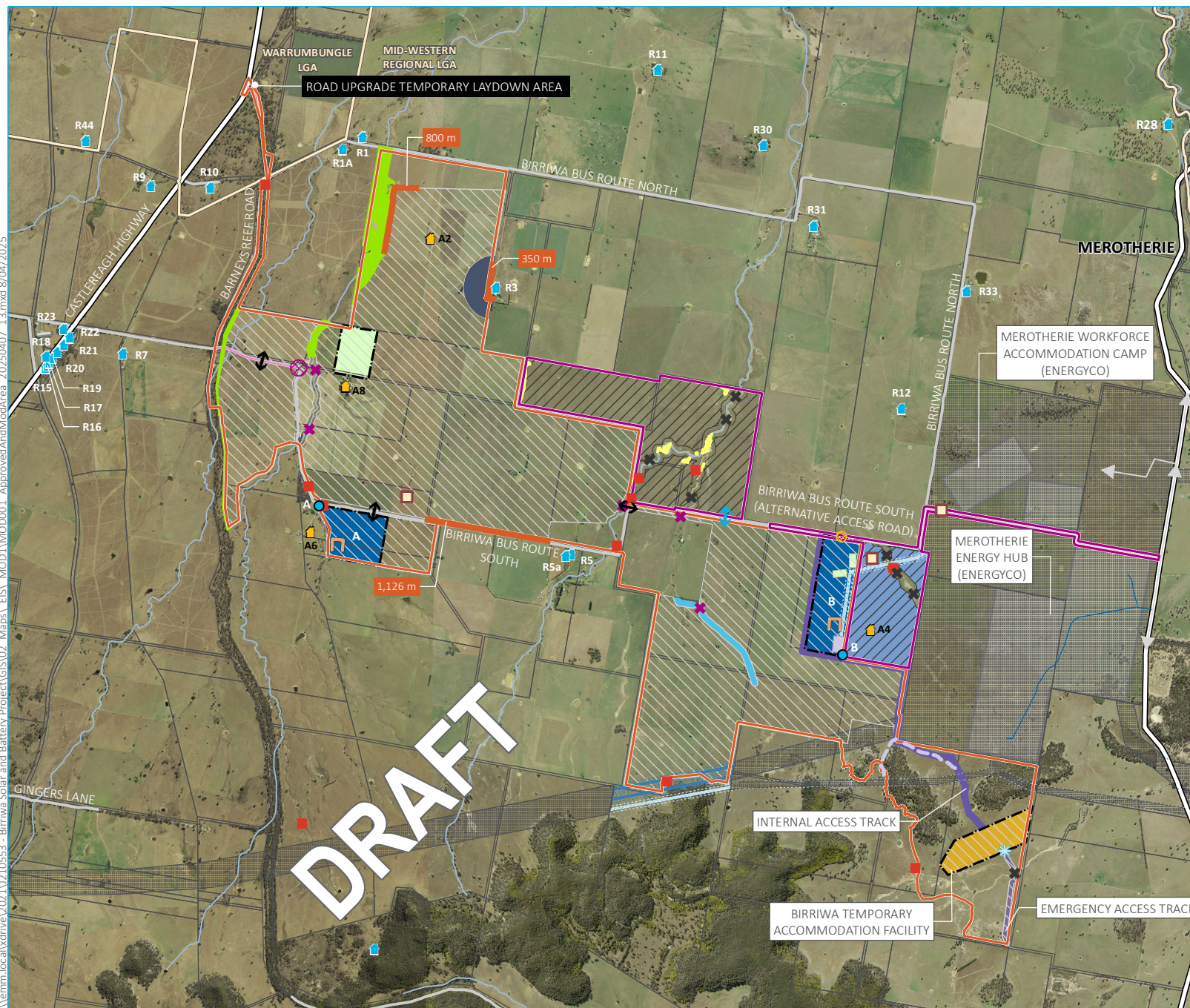


\\emm.local\drive\2021\210553 - Birriwa Solar and Battery Project\GIS\02 Maps\ EIS\ MOD1\MOD001 ApprovedAndModArea 20250407 13.mxd 8/04/2025



KEY

Approved project layout

- Project area
- Development footprint
- Restricted development area
- Road upgrade corridor
- Vegetation to be retained
- Potential creek crossing point
- Potential public road crossing location
- Connection point (option A or B)
- Indicative noise wall location
- Solar panel setback
- Landscape screen planting
- Project access point
- Emergency access point
- Operational infrastructure area including substation, operational facility and BESS (Option A or B)
- Birriwa temporary accommodation facility
- Temporary construction compound

Modification project layout

- Modification area
- Modification development footprint
- Vegetation to be retained
- Secondary access point
- Internal access track
- Potential creek crossing point
- Potential public road crossing location
- Proposed extension for operational infrastructure area including substation, operational facility and BESS

EnergyCo infrastructure

- 500 kV transmission line
- 330 kV transmission line
- Permanent access easement
- Access in/out
- Access road
- Brake and winch site
- 330 kV switching station
- Indicative construction easement (adjacent property)
- Merotherie Energy Hub and workforce accommodation camp

Existing environment

- Dwelling not associated with the project
- Dwelling associated with the project
- Aboriginal heritage site (to be avoided)
- Aboriginal heritage site (to be harmed)
- Local government area boundary
- Major road
- Minor road

The approved project and the modification area

Birriwa Solar and BESS Project - Modification
Figure 3.1