

Notification of approval decision

Robbins Island Renewable Energy Park, Robbins Island, Tasmania (EPBC 2017/8096)

This decision is made under section 130(1) and 133(1) of the *Environment Protection and Biodiversity Conservation Act 1999* (EPBC Act). Note that section 134(1A) of the EPBC Act also applies to this approval. That provision provides, in general terms, that if the approval holder authorises another person to undertake any part of the Action, the approval holder must take all reasonable steps to ensure that the other person is informed of any conditions attached to this approval, and that the other person complies with any such conditions.

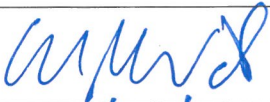
Approved Action

person to whom the approval is granted (approval holder)	ACEN Robbins Island Pty Ltd ACN: 618 734 277
Action	To construct, operate and decommission a wind farm with up to 100 wind turbine generators and associated infrastructure, including a bridge, a wharf, and four quarries, on Robbins Island, Tasmania. See EPBC Act referral 2017/8096 subject to the variation of the proposed Action accepted by the Minister under section 156B on 18 September 2019.

Approval decision

Decision	My decision on whether or not to approve the taking of the Action for the purposes of each controlling provision for the Action are as follows.	
	Controlling Provision	Decision
	Listed threatened species and communities (section 18 and section 18A)	Approved
	Listed migratory species (section 20 and section 20A)	Approved
period for which the approval has effect	This approval has effect until 29 August 2090	
conditions of approval	The approval is subject to conditions under the EPBC Act as set out in Annexure A.	

Person authorised to make decision

name and position	<u>Senator the Hon Murray Watt</u> <u>Minister for the Environment and Water</u>
signature	
date of decision	29/8/25

Annexure A

Note: Words and terms appearing in **bold** (excluding headings) have the meaning assigned to them at **Part C – Definitions**.

Part A – Avoidance, mitigation, and compensation conditions

CLEARING LIMITS

- 1) The approval holder must not:
 - a) **Clear** outside the **Action area**;
 - b) Take the Action outside the **Action area**.
 - c) **Construct** more than 100 **WTGs** within the **Action area**.
 - 2) The approval holder must not **clear** more than:
 - a) 5.95 ha of **Tasmanian Devil Optimal Breeding Habitat**;
 - b) 219.90 ha of **Tasmanian Devil Sub-Optimal Breeding Habitat**;
 - c) 45.73 ha of **Tasmanian Devil Foraging and Dispersal Habitat**.
- Note:** Allowable clearing limits comprise both permanent and temporary clearing.
- 3) The approval holder may **microsite WTGs** and associated infrastructure within the **Action area**, in accordance with conditions FF15, FF16 and/or OP1B of the **Tasmanian Approval**. If **micrositing** is used, the approval holder must ensure that no **WTG** or associated infrastructure is **constructed** within any buffer zone required by the **Tasmanian Approval**.

Note: the clearing limits specified in conditions 1 and 2 apply whether or not **micrositing** is used.

Newly discovered protected matters

- 4) If the approval holder detects the presence, where likely to be affected by the Action, of any **protected matter** or the habitat of any **protected matter** not previously reported to the **department** as part of the referral of this Action or in accordance with this condition, the approval holder must:
 - a) notify the **department** in writing of the presence and likely extent of any **protected matter** or the habitat of any **protected matter** not previously reported to the **department** within **10 business days** of detecting the presence of any **protected matter** or the habitat of any **protected matter** not previously reported to the **department**, and
 - b) not **clear** any area where the **protected matter** or the habitat of the **protected matter** is located unless:
 - i) condition 1 or 2 provides for the **clearing** of that **protected matter** or habitat of that **protected matter**; and

- ii) **clearing** does not exceed the limit specified in condition 2 for that **protected matter** or habitat of that **protected matter**.

IMPLEMENTATION OF TASMANIAN APPROVAL CONDITIONS

- 5) The approval holder must comply with conditions G2, CN1, CN2, CN3, CN5, DC1, DC4, and FF1 to FF21 (inclusive) of the **Tasmanian Approval**, to the extent they relate to **protected matters**.
- 6) To protect **listed bird and bat species** from colliding with **WTGs**, the approval holder must mark one blade of each **WTG** black or with a striped pattern (consistent with the trial described at condition FF2 part 3.9 of the **Tasmanian Approval**). This trial must continue to be implemented throughout the period of **operation** unless otherwise agreed in writing by the **Minister**.

ACTION MANAGEMENT PLANS

- 7) All commitments made in **plans**, including environmental outcomes, management measures, corrective measures, trigger values and performance indicators must be **SMART** and based on referenced or included evidence of effectiveness. All **plans** must be consistent with the **Environmental Management Plan Guidelines**, and must include:
 - a) details of the relevant **protected matters** and a reference to **EPBC Act** approval conditions to which the plan refers;
 - b) a table of commitments made in the plan to achieve the environmental outcomes, and a reference to exactly where these commitments are detailed in the plan;
 - c) commitments capable of ensuring that the environmental outcomes are achieved;
 - d) reporting and review mechanisms to demonstrate compliance with the commitments made in the plan;
 - e) an assessment of risks relating to achieving the environmental outcomes, and risk management strategies and/or mitigation measures that will be applied to address identified risks;
 - f) impact avoidance, mitigation and/or repair measures, and the timing of those measures;
 - g) a monitoring program, which must include:
 - i) performance indicators;
 - ii) trigger values for corrective measures;
 - iii) the timing and frequency of monitoring, ensuring monitoring is capable of detecting trigger values and changes in the performance indicators;
 - iv) proposed corrective measures if trigger values are reached; and
 - h) references to other relevant plans or conditions of approval (including **Tasmanian approval** conditions).

Tasmanian Wedge-Tailed Eagle Monitoring and Mitigation

- 8) The approval holder must ensure that a pre-construction survey for **Tasmanian Wedge-Tailed Eagle** nests is completed prior to the commencement of **construction**, as required by condition FF1 of the **Tasmanian Approval**:
 - a) the pre-construction nest survey must be undertaken by a **suitably qualified independent ecologist**, outside of the **eagle management constraint period**, approximately 12 months prior to the commencement of **construction**; and
 - b) the approval holder must notify the **department** upon completion of the nest survey and must submit a report outlining its findings to the **department** prior to the commencement of **construction**.
- 9) The approval holder must ensure that **WTGs** and related infrastructure are not **constructed** within 1 km of any known **Tasmanian Wedge-tailed Eagle** nest.
- 10) The approval holder must submit to the **department**, for the **Minister's** approval, a version of the Eagle Monitoring and Management Plan required by condition FF2 of the **Tasmanian Approval** that also meets the requirements of condition 11). The approval holder must not **commence the Action** unless the **Minister** has approved the Eagle Monitoring and Management Plan in writing.
- 11) The approval holder must ensure the Eagle Monitoring and Management Plan is prepared by a **suitably qualified independent ecologist**. The Eagle Monitoring and Management Plan must be consistent with **Fauna Technical Note 1**. By implementing the Eagle Monitoring and Management Plan, the approval holder must achieve the following environmental outcomes:
 - a) if a decline in the Robbins Island **Tasmanian Wedge-tailed Eagle** population is detected at any point during the project's lifespan, compared to the baseline population recorded during the pre-construction survey undertaken in accordance with condition FF2 of the **Tasmanian Approval**, the approval holder is required to investigate and submit a detailed report to the **department** within 3 months of the discovery, outlining the probable causes that have contributed to the decline; and
 - b) to the extent that any decline is a result of the Action, the approval holder must propose and commit to implement corrective measures to address the decline.

Devil Facial Tumour Disease Prevention, Monitoring and Early Detection

- 12) The approval holder must submit a **DFTD Prevention and Monitoring Program (DFTDPMP)** to the **department** for the **Minister's** approval. The approval holder must not **commence the Action** unless the **Minister** has approved the **DFTDPMP** in writing. The approved **DFTDPMP** must be implemented until the expiry date of this approval. The **DFTDPMP** must:
 - a) commit to notifying the **department** of any detection of DFTD on Robbins Island within **5 business days** of detection;

- b) include a monitoring methodology based on scientifically validated techniques, that will allow detection of DFTD within a timeframe sufficient to enable early intervention and remediation actions to occur;
 - c) include remediation actions that:
 - i) focus on preventing the spread of DFTD to Robbins Island as the primary response;
 - ii) focus on isolation and containment if DFTD is detected on Robbins Island;
 - iii) seek advice on remediation and/or long-term management options from a **suitably qualified independent ecologist**; and
 - iv) commit to implementing remediation and/or long-term management options as recommended by the **suitably qualified independent ecologist**;
 - d) detail proposed monitoring locations that are selected in accordance with risk. Higher risk sites (including within 2 km of the **bridge**) should be subject to more intensive monitoring than other proposed sites;
 - e) monitoring frequency, including consideration of seasonal or temporal adjustments to monitoring intensity if relevant; and
 - f) include the detailed **bridge** design as agreed under **Tasmanian approval** condition CN1 to provide context for the justification of monitoring methodology.
- 13) By implementing the DFTDMP, the approval holder must achieve the following environmental outcomes:
- a) prevent the spread of DFTD to the **Tasmanian Devil** population on Robbins Island as a result of the Action; and
 - b) ensure the health of the Tasmanian Devil population on Robbins Island through the early intervention and remediation by the approval holder of any DFTD incidence.

Construction Environment Management Plan (CEMP)

- 14) The approval holder must submit a **Construction Environment Management Plan** to the to the Director of the Tasmanian EPA for approval, as required by condition CN2 of the **Tasmanian Approval**. The **CEMP** may be approved and updated in accordance with project **Stage 1** and **Stage 2**. The approval holder must submit the approved **CEMP** and any revised versions to the **department** prior to commencing **clearing** or **construction** of **Stage 1** and **Stage 2**. The approved **CEMP** must be implemented.
- 15) By implementing **CEMP** the approval holder must achieve the following environmental outcome:
- a) prevent any avoidable **harm** to **protected matters** and mitigate unavoidable and accidental **harm** to **protected matters** arising from **construction**.

Orange-bellied Parrot Site Specific Survey Methodology (SSSM)

- 16) Within 6 months of the date of this approval, the approval holder must submit an **Orange-bellied Parrot Site Specific Survey Methodology (SSSM)** to the **department** for the **Minister's** approval. The SSSM must be endorsed in writing by **NRE Tasmania** before being submitted to department. The approval holder must implement the approved **SSSM** for at least 3 years prior to the commencement of **construction** to establish a detailed baseline understanding of contemporary site usage by **Orange-bellied Parrot**. The approved **SSSM** must continue to be implemented until the expiry date of this approval. The **SSSM**:
- a) must be prepared by a **suitably qualified independent ecologist**;
 - b) should justify selection of a range of potential survey techniques including but not limited to visual, radio tracking, GPS tracking and acoustic surveys;
 - c) should justify timing (month) and duration (days/hours) of survey effort required to achieve the objective of condition 17; and
 - d) must justify locations and intensity of survey in **Orange-bellied Parrot habitat** on Robbins Island, as well as within the **WTG** development zone.
- 17) By implementing the **SSSM**, the approval holder must achieve the following environmental outcome:
- a) capture detailed information on **Orange-bellied Parrot** site utilisation, including timing, duration and flight characteristics that will inform mitigation measures required under the **Orange-bellied Parrot Mitigation Plan** and the **BBMP**.

Orange-bellied Parrot Mitigation Plan

- 18) The approval holder must submit an **Orange-bellied Parrot Mitigation Plan (OBPMP)** to the **department** for the **Minister's** approval.
- 19) The **OBPMP** must be endorsed in writing by **NRE Tasmania** before being submitted to DCCEEW for approval.
- 20) To mitigate the risk of collision mortality on the **Orange-bellied Parrot** the **OBPMP** must commit to providing sufficient funding to ensure the **NRE Tasmanian Orange-bellied Parrot conservation program** can implement measures identified and prioritised through its existing adaptive management approach to support a positive population trajectory at an average of a 10-15 per cent increase per annum measured at the annual census date.
- 21) The funding commitments agreed through the **OBPMP** must:
- a) be quantified in the **OBPMP** as required to meet the objective of Condition 20;
 - b) support holistic management measures at key **Orange-bellied Parrot** breeding and release site(s), including but not limited to supplementary feeding; captive breeding; nest box establishment and maintenance; and predator control measures;

- c) be adaptive and flexibly directed to management measures determined to maximise the objective of continued growth in the wild population; and
 - d) be sufficient to overcome existing capacity constraints and animal husbandry limitations.
- 22) The **OBPMP** must consider timing and location for captive breeding releases.
- 23) The outcomes agreed in the **OBPMP** may be adjusted by submitting a revised OBPMP for the Minister's consideration if the data produced through the **SSSM** can quantify or clarify actual OBP collision mortality risk.
- 24) The approval holder must not **commence the Action** unless the **Minister** has approved the **OBPMP** in writing. The approval holder must implement the approved **OBPMP** until the expiry date of this approval.

BIRD AND BAT MANAGEMENT PLAN

- 25) The approval holder must, at least 12 months prior to **commissioning**, submit to the **department** for the approval of the **Minister**, a Bird and Bat Management Plan (BBMP) to specify how the approval holder will measure and reduce the risk of **listed bird and bat species** colliding with wind turbines or suffering barotrauma.
- 26) The BBMP must be prepared by a **suitably qualified independent ecologist**. The BBMP must be consistent with, and include evidence of how it is consistent with:
- a) the **Onshore Wind Farms interim guidance**; and
 - b) approved **conservation advices** and **recovery plans** for **listed bird and bat species** available on **SPRAT**.
- 27) The approval holder must not commence **commissioning** unless the **Minister** has approved the BBMP in writing. The approval holder must commence implementing the approved BBMP no later than 30 **business days** after the date it is approved and continue to implement the approved BBMP until the **completion of the Action**.
- 28) By implementing the BBMP, the approval holder must achieve the following environmental outcomes:
- a) prevent any avoidable **harm to protected matters** as a result of the Action;
 - b) implement monitoring and reporting mechanisms capable of timely identification of **listed bird and bat species** impacts, including turbine collisions and barotrauma; and
 - c) develop, apply and review adaptive management strategies to minimise collision and barotrauma impacts on **listed bird and bat species**, to the satisfaction of the **Minister**.

Site-wide, species-specific risk assessment

- 29) The BBMP must identify each **listed bird and bat species** at risk of injury and/or mortality as a result of the Action. This risk assessment must include consideration of, but is not limited to:

- a) a preliminary site characterisation, which must include, but not be limited to:
 - i) site characteristics: including **habitat features**, topography, typical wind and weather patterns, presence of wetlands and other features likely to attract birds and/or bats, and the presence in, or distance from, the **Action area** of actual or potential **listed bird and bat species** nesting, roosting and foraging areas; and
 - ii) **species characteristics**;
- b) potential changes in **Action area** utilisation by the **listed bird and bat species** post-commissioning; and
- c) the distribution of potential and known habitat for the **listed bird and bat species** in the **Action area** and the surrounding region.

Pre-commissioning surveys

- 30) The BBMP must include, and be informed by, the results of **bird and bat utilisation surveys** undertaken for at least 24 months prior to **construction**, as well as the survey requirements specific to the Orange-bellied Parrot as described the SSSM in accordance with conditions 16 and 17.
- 31) Within 6 months of the date of this approval, the approval holder must submit a **Bird and Bat Utilisation Survey Methodology (BBUSM)** to the department for the Minister's approval. The BBUSM must be consistent with the **Survey guidelines for Australia's threatened birds** as far as it relates to bird species. The approval holder must implement the approved BBUSM for at least 2 years prior to the commencement of **construction** to establish a detailed baseline understanding of contemporary site usage by **listed bird and bat species**.
- 32) The suite of **bird and bat utilisation surveys** for **listed bird and bat species** undertaken prior to **commencement of the Action** must:
 - a) be so designed (in consideration of the proposed turbine layout and ability for observers to witness **listed bird and bat species** activity) and apply sufficient survey effort to accurately determine and document the presence and site utilisation of **listed bird and bat species**;
 - b) be undertaken in at least two successive occurrences of each season;
 - c) be designed to support a Before-After, Control-Impact (BACI) monitoring framework in conjunction with the findings of **bird and bat utilisation surveys** for **listed bird and bat species** undertaken following **commissioning**;
 - d) be conducted by one or more **suitably qualified independent ecologists**; and
 - e) be of sufficient spatial coverage to adequately evaluate site utilisation by **listed bird and bat species**.

Post-commissioning surveys

- 33) The BBMP must specify and commit to undertake **bird and bat utilisation surveys for listed bird and bat species**, following **commissioning**, that meet the requirements specified in the next condition.
- 34) The suite of **bird and bat utilisation surveys for listed bird and bat species** undertaken following **commissioning** must:
- a) commence within 1 month after **commissioning**;
 - b) be undertaken over a period which includes at least 24 months of **full operation**;
 - c) be undertaken in at least two successive occurrences of each season;
 - d) be undertaken in at least two **typical occurrences** of each season;
 - e) be conducted by one or more **suitably qualified independent ecologists**;
 - f) be designed to support a BACI monitoring framework in conjunction with the findings of the **bird and bat utilisation surveys for listed bird and bat species** undertaken prior to **commissioning**;
 - g) adopt survey methods and timings which are consistent with the methodologies of the **bird and bat utilisation surveys** undertaken prior to **commissioning**;
 - h) be designed to detect any behaviour changes of **listed bird and bat species**, following **commencement of the Action**, including any avoidance of turbines and altered utilisation of the **Action area**;
 - i) be so designed (in consideration of the turbine layout and ability for observers to witness **listed bird and bat species** activity) and apply sufficient survey effort to reliably determine and document the presence and site utilisation of **listed bird and bat species** post-**commissioning**; and
 - j) be designed to inform the adaptive management framework and enable timely implementation of corrective measures should actual impacts trend towards exceeding the impacts predicted in the referral of this Action.

Post-commissioning fatality monitoring

- 35) The BBMP must include a post-commissioning fatality monitoring program. The post-commissioning fatality monitoring program must at a minimum:
- a) specify and statistically justify the effort required to undertake site-specific carcass detectability trials, including the timing and frequency of searcher efficiency and carcass persistence trials, as well as corrections for unsearched areas (i.e. density weighted proportion analysis) to accurately correct for bias in calculating annual mortality estimates;

- b) include details of how carcasses and dismembered partial carcasses will be identified, including commitments for DNA testing of carcasses that cannot be otherwise identified by a **suitably qualified independent ecologist**;
- c) provide details of the methodology, data input/output and results of all statistical analyses underlying the monitoring program, including the statistically justified survey effort required and species-specific annual mortality estimates; and
- d) include a peer-review of the statistical analyses and results of the post-commissioning fatality monitoring program by a **suitably qualified statistician**.

Adaptive management framework

- 36) The BBMP must include an adaptive management framework. The adaptive management framework must, at a minimum:
- a) be designed to incorporate site-specific data collected through the pre and post-commissioning monitoring program, the post-commissioning fatality monitoring program and take into account changes to each **listed bird and bat species' risk profiles**;
 - b) detail and commit to implement adaptive avoidance and mitigation measures, including curtailment measures;
 - c) include a table of species-specific trigger levels and the management measures and corrective actions that will be implemented if the species-specific trigger levels for one or more species are exceeded;
 - d) detail a process and triggers for reviewing the post-commissioning fatality monitoring program, impact risk assessments, and mitigation and corrective measures; and
 - e) to avoid significant impacts from turbine collision and barotrauma to **listed bird and bat species**, be designed to clearly demonstrate the relationships between implementing:
 - i) mitigation and management measures;
 - ii) monitoring, reporting and investigations; and
 - iii) corrective actions.

Turbine Impacts

- 37) If it is detected or estimated that the **annual impact trigger threshold** for any **listed bird and bat species** has been met or exceeded in any given financial year, the Approval Holder must notify the **department** within 5 **business days** from when it became aware that the **annual impact trigger threshold** for any **listed bird and bat species** has been met or exceeded.
- 38) To mitigate **harm to protected matters**, if **annual impact trigger threshold** has been met or exceeded in a given financial year, the Approval Holder must submit to the **department**, for the **Minister's** approval, an Impact Trigger Avoidance Review.
- 39) The Impact Trigger Avoidance Review required by condition 38) must:

- a) be undertaken by a **suitably qualified independent ecologist**;
 - b) include consideration of sightings of the relevant **listed bird and bat species** in the **Action area** and surrounding area within 60 km of the **Action area**;
 - c) include updates to the impact assessment of the project operation on the **listed bird and bat species** and propose proactive measures to avoid and mitigate the risk of further **annual impact trigger threshold** exceedance events for the relevant **listed bird and bat species**;
 - d) include updates to the risk assessment for the relevant **listed bird and bat species**; and
 - e) be submitted to the **Minister** within 90 business days of the approval holder detecting or estimating the **annual impact trigger threshold** has been met or exceeded.
- 40) If the **Minister** is not satisfied with the Impact Trigger Avoidance Review required by condition 38), including the efficacy of the proposed measures to avoid and mitigate the risk of further **annual impact trigger threshold** exceedance events for the relevant **listed bird and bat species**, the **Minister** may require the Approval Holder to:
- a) implement monitoring and management measures consistent with best practice and relevant scientific evidence as prescribed by the **Minister**; or
 - b) cease rotation of any or all **WTG** blades in the **Action area** until the **Minister** has approved, in writing, the recommencement of the rotation of all, or some, of the wind turbine generator blades.

OFFSETS

Orange-bellied Parrot Offset Strategy

- 41) To treat the predicted residual significant risk to the species identified through the EPBC Act assessment the approval holder must provide an Orange-bellied Parrot Offset Strategy (OBP OS) to the **department** for approval prior to **construction** commencing. The OBP OS must be endorsed in writing by **NRE Tasmania** before being submitted to department. Offsets for the **Orange-bellied Parrot** must be consistent with the **Environmental Offsets Policy**. The OBP OS should consider a range of potential offsets and justify a final proposal that will deliver the best conservation outcome for the species. The OBP OS should consider (but not necessarily be limited to) the following measures:
- a) **Orange-bellied Parrot** research proposals. Research proposals must deliver peer reviewed scientific outputs that will improve conservation outcomes for the species. Preference should be given to proposals that will:
 - i) identify migration threats, migration habitat requirement, and migration mortality levels (north and south);
 - ii) identify current overwintering sites, including frequency and duration of use, causes of mortality during overwintering and options for abating this threat;

- iii) identify the drivers for differing mortality rates amongst juvenile and adult **Orange-bellied Parrots**; and
 - iv) broader analysis of population outcomes over time including causes for historical decline and population modelling under various recovery scenarios;
 - b) research proposals must align with the **Orange-bellied Parrot recovery plan** and/or contemporary understanding of the gaps in scientific understanding of this species that will deliver the greatest benefit to the species; and
 - c) the research proposal should identify the lead institution and timeframes for delivery. Consideration will be given to proposals that complement or enhance the Department's Renewables Environmental Research Initiatives.
- 42) Land management activities to improve conservation outcomes. Options for consideration may include threat abatement (to reduce predators), habitat restoration options and establishment or expansion of conservation zones, and
- 43) Other proposals as identified by the approval holder that can be demonstrated to provide a conservation benefit to the species.

Tasmanian Devil Offset Strategy

- 44) To compensate for the residual significant impacts of the Action on the **Tasmanian Devil**, the approval holder must commence implementation of the **Tasmanian Devil Offset Strategy** from the **commencement of the action** and continue to implement the **Tasmanian Devil Offset Strategy** at least until the expiry date of this approval. Offsets for the **Tasmanian Devil** must be consistent with the **Environmental Offsets Policy**.

Tasmanian Devil Offset Area Management Plan (OAMP)

- 45) To compensate for the residual significant impacts of the Action on the **Tasmanian Devil**, the approval holder must commence implementation of the **Tasmanian Devil Offset Area Management Plan (OAMP)** prior to the **commencement of the Action** and continue to implement the **OAMP** at least until the expiry date of this approval.
- 46) The approval holder must, within 5 **business days** of commencing implementation of the **OAMP**, notify the **department** of the date on which implementation of the **OAMP** commenced.

Offset Site Securement

- 47) To compensate for the residual significant impacts of the Action on the **Tasmanian Devil** the approval holder must not **commence the Action** unless the **offset site** has been **secured**. The approval holder must ensure that the **offset site** remains **secured** at least until the expiry date of this approval.

Offset Site Outcomes

- 48) The approval holder must, within 40 **business days** of the 20th anniversary of the **commencement of the Action**:

- a) have a **suitably qualified independent ecologist** assess and report on the **offset site** to determine if the **offset outcomes** have been achieved, and if not, recommend necessary measures to remedy progress towards **offset outcomes**;
 - b) submit to the **department** a report prepared by the **suitably qualified independent ecologist** in the month after the 20th anniversary of the **commencement of the Action**; and
 - c) notify the **department** in writing of any **offset outcome** that has not been achieved at the **offset site** and the likely reasons that the **offset outcome(s)** have not been met.
- 49) The approval holder must achieve the **offset outcomes** at the **offset site** 20 years after commencing to implement the **OAMP**. Once achieved, the approval holder must maintain, or exceed, the **offset outcomes** at least until the expiry date of this approval.

DECOMMISSIONING

- 50) At or prior to the 55th anniversary of the date of this approval, the approval holder must cease **operation** of the wind turbine generators and commence **decommissioning** in accordance with the Decommissioning and Rehabilitation Plan referred to in condition DC1 of the **Tasmanian Approval**.
- 51) At the 60th anniversary of the date of this approval, the approval holder must have removed all above ground infrastructure associated with the Action, including wind turbine generators, transmission towers, and cabling from the **Action Area**, except where agreed in accordance with condition DC1 part 3.2 of the **Tasmanian Approval**.

Part B – Administrative conditions

PLAN REVISION

Note: Section 143A of the **EPBC Act** entitles the approval holder to apply for the **Minister's** approval of a revised version of a **plan**.

- 52) The approval holder may choose to revise a **plan** required to be implemented under conditions 12, 13, 16, 17, 31, 38, 39 and 40 or as subsequently revised in accordance with these conditions, without submitting it for approval under section 143A of the **EPBC Act**, if:
- a) the taking of the Action in accordance with the revised **plan** would be consistent with the approved Action;
 - b) the taking of the Action in accordance with the revised **plan** would be consistent with the conditions attached to this approval;
 - c) the taking of the Action in accordance with the revised **plan** would not be likely to have a **new or increased impact**; and
 - d) the approval holder notifies the **department** electronically that it has prepared a revised version of the **plan** (the '**revised plan**'). In notifying the **department**, the approval holder must specify each condition which references the **plan** and provide the **department** with:

- i) an electronic copy of the revised **plan**;
 - ii) an electronic copy of the revised **plan** marked up with track changes to show the differences between the **plan** and the revised **plan**;
 - iii) a comprehensive explanation of all differences between the **plan** and the revised **plan**;
 - iv) a declaration that the approval holder has read and understands the *Guidance on 'new or increased impact' relating to changes to approved management plans under EPBC Act environmental approvals*, Commonwealth of Australia 2017;
 - v) a comprehensive analysis and detailed discussion on the likelihood that taking the Action in accordance with the revised plan will not have, or will be not likely to have, a **new or increased impact**;
 - vi) written notice of the date on which the approval holder will implement the revised **plan** (the 'revised **plan** implementation date'), being at least 30 **business days** after the date of providing notice of the revision of the **plan**, or a date agreed to in writing with the **department**; and
 - vii) a copy of the **compliance report** for the latest **ACR period** and a statement of any relevant history of compliance (including non-compliance) in relation to the **plan**.
- 53) The approval holder must commence implementation of the revised plan from the revised plan implementation date unless otherwise notified in writing by the Minister.
- 54) If the **Minister** notifies the approval holder that the **Minister** is satisfied that the taking of the Action in accordance with a **plan** which has been revised without submitting it for the **Minister's** approval would be likely to have a **new or increased impact**, then:
- a) the approval holder's ability to revise a **plan** without submitting the **plan** for **Minister** approval does not apply, or ceases to apply, in relation to the revised **plan**;
 - b) the approval holder must implement the **plan** in force immediately prior to that revised **plan** or a version of the **plan** specified by the **Minister** in the notice; and
 - c) the **Minister** may also notify that, for a specified period, the approval holder's ability to revise a **plan** without submitting the **plan** for **Minister** approval does not apply for one or more specified **plans**.
- 55) The approval holder may, at any time by giving written notice to the **department**, revoke its choice to implement a **plan** which has been revised without submitting it for the **Minister's** approval. If the approval holder revokes the choice to implement a revised **plan**, the approval holder must implement the plan in force immediately prior to that revised **plan**.

Note: The above conditions are not intended to limit the operation of section 143A of the **EPBC Act**.

SUBMISSION AND PUBLICATION OF PLANS

- 56) Wherever these conditions require the approval holder to submit any **plan** to the **department**, all such **plans** must be submitted to the **department** electronically.
- 57) Unless otherwise agreed to in writing by the **Minister**, the approval holder must publish each **plan** on the **website** within 15 **business days** of the date:
- a) of this approval, if the version of the **plan** to be implemented is specified in these conditions;
 - b) the **plan** is approved by the **Minister** in writing, if the **plan** requires the approval of the **Minister**;
 - c) the **plan** is approved by a state government as required under a **Tasmanian Approval** condition which must be complied with in accordance with these **EPBC Act** conditions.
- 58) The approval holder must keep all **plans** published on the **website**, in a format that is easily accessible and downloadable, from the first date which that **plan** must be published and until the expiry date of this approval. This requirement applies to all current and superseded versions of **plans**.
- 59) The approval holder is required to exclude or redact **sensitive biodiversity data** from any version of a **plan** before that **plan** is published on the **website** or otherwise provided to a member of the public. If **sensitive biodiversity data** is excluded or redacted from a **plan**, the approval holder must notify the **department** in writing what exclusions and redactions have been made in the version published on the **website**.

MODIFICATIONS TO STATE APPROVAL

- 60) The approval holder must notify the **department** in writing of any proposed change to the **Tasmanian Approval**, or any plans required under the **Tasmanian Approval**, that may relate to **protected matters** within 2 **business days** of formally proposing such a change and within 5 **business days** of becoming aware of any proposed change.
- 61) The approval holder must notify the **department** in writing of any change to the **Tasmanian Approval** conditions, or any plans required under the **Tasmanian Approval**, that may relate to **protected matters**, within 5 **business days** of such a change to conditions or plans coming into effect. Such notification must include a copy of the changed **Tasmanian Approval** conditions showing what changes have been made.

COMMENCEMENT OF THE ACTION

- 62) The approval holder must notify the **department** electronically of the date of **commencement of the Action**, within 5 **business days** following **commencement of the Action**.
- 63) The approval holder must not **commence the Action** later than 5 years after the date of this approval decision.

COMPLIANCE RECORDS

64) The approval holder must maintain accurate and complete **compliance records** and document the procedure for recording and storing **compliance records**.

65) If the **department** makes a request in writing, the approval holder must provide electronic copies of **compliance records** to the **department** within the timeframe specified in the request.

Note: **Compliance records** may be subject to audit by the **department**, or by an **independent auditor** in accordance with section 458 of the **EPBC Act**, and/or be used to verify compliance with the conditions. Summaries of the results of an audit may be published on the **department's** website or through the general media.

66) The approval holder must ensure that any **monitoring data**, surveys, maps, and other spatial and metadata required under the conditions of this approval are prepared in accordance with the *Guidelines for biological survey and mapped data*, Commonwealth of Australia 2018, or as otherwise specified by the **Minister** in writing.

67) The approval holder must ensure that any **monitoring data**, surveys, maps, and other spatial and metadata required under the conditions of this approval are prepared in accordance with the *Guide to providing maps and boundary data for EPBC Act projects*, Commonwealth of Australia 2021, or as otherwise specified by the **Minister** in writing.

68) The approval holder must submit all **monitoring data**, surveys, maps, other spatial and metadata and all species occurrence record data (sightings and evidence of presence) electronically to the **department** within 20 business days of the next anniversary of the date of this approval decision except where otherwise specified in a **plan**.

ANNUAL COMPLIANCE REPORTING

69) The approval holder must prepare a **compliance report** for each **Annual Compliance Report period (ACR period)**.

70) The approval holder must ensure each **compliance report** includes:

- a) accurate and complete details of compliance and any non-compliance with:
 - i) each condition imposed under the **Tasmanian Approval**, if a condition attached to this approval decision requires compliance with that **Tasmanian Approval** condition;
 - ii) each condition attached to this approval decision; and
 - iii) all commitments made in each **plan**;
- b) a schedule of all **plans** in effect in relation to these conditions during the **ACR period**;
- c) accurate and complete details of how each **plan** was implemented during the **ACR period**; and
- d) if any **incident** occurred, accurate and complete details of each **incident**.

71) The approval holder must ensure each **compliance report** is completed to the satisfaction of the **Minister** and is consistent with the *Annual Compliance Report Guidelines*, Commonwealth of Australia 2023.

- 72) The approval holder must, within 20 **business days** following the end of each **ACR period**, in a format that is easily accessible and downloadable, publish on the **website**:
- a) each **compliance report**; and
 - b) a **shapefile** showing all **clearing of protected matters**, and their habitat, undertaken within the **ACR period**.
- 73) The approval holder must:
- a) exclude or redact **sensitive biodiversity data** from each **compliance report** and **shapefile** published on the **website** or otherwise provided to a member of the public;
 - b) if **sensitive biodiversity data** is excluded or redacted from a version of a **compliance report** published or otherwise provided to a member of the public, submit the full **compliance report** to the **department** within 5 **business days** of its publication on the **website** and notify the **department** in writing what exclusions and redactions have been made in the version published on the **website** or otherwise provided to a member of the public; and
 - c) If **sensitive biodiversity data** is excluded or redacted from a version of a **shapefile** published or otherwise provided to a member of the public, submit the full **shapefile** to the **department** within 5 **business days** of its publication on the **website** and notify the **department** in writing what exclusions and redactions have been made in the version published on the **website** or otherwise provided to a member of the public.
- 74) The approval holder must notify the **department** electronically, within 5 **business days** of each date of publication that the **compliance report** has been published on the **website**. In this notification, the approval holder must provide the **department** with the web address for where the **compliance report** and related **shapefile** are published on the **website**.
- 75) The approval holder must keep each **compliance report** and related **shapefile** published on the **website** from the first date which that **compliance report** must be published and until the expiry date of this approval.

Note: **Compliance reports** may be published on the **department's** website.

REPORTING NON-COMPLIANCE

- 76) The approval holder must notify the **department** electronically, within 2 **business days** of becoming aware of any **incident**. The approval holder must specify in each notification:
- a) any condition or commitment made in a **plan** which has not been, or may have not been, complied with;
 - b) a short description of the **incident**; and
 - c) the location (if applicable, including co-ordinates), date and time of the **incident**.
- 77) The approval holder must provide to the **department** in writing, within 12 **business days** of becoming aware of an **incident**, the details of that **incident**. The approval holder must specify:

- a) all corrective measures and investigations which the approval holder has already taken in respect of the **incident**;
- b) the potential impacts of the **incident**;
- c) the method and timing of any corrective measures that the approval holder proposes to undertake to address the **incident**; and
- d) any variation of these conditions or revision of a **plan** that will be required to prevent recurrence of the **incident** and/or to address its consequences.

INDEPENDENT AUDIT

- 78) The approval holder must ensure that an **independent audit** of compliance with the conditions is conducted for every **audit period**.
- 79) The approval holder must submit details of the proposed **independent auditor** and their qualifications to the **department** within 10 **business days** following the end of each **audit period**.
- 80) The approval holder must ensure the scope of each **independent audit** is sufficient to determine the compliance status for each condition of approval, and each commitment made in each **plan**.
- 81) The approval holder must ensure the criteria for each **independent audit** and the undertaking of each **independent audit** are consistent with the **Independent Audit and Audit Report Guidelines**.
- 82) The approval holder must submit an **audit report** to the **department** for written agreement from the **department** within 3 months following the end of each **audit period**, or as otherwise directed by the **Minister** in writing.
- 83) The approval holder must ensure each **audit report** is completed to the satisfaction of the **Minister** and is consistent with the **Independent Audit and Audit Report Guidelines** to the extent that the **Independent Audit and Audit Report Guidelines** are consistent with these conditions.
- 84) The approval holder must publish each **audit report** on the **website**, in a format that is easily accessible and downloadable, within 10 **business days** of the date the **department** agrees to that **audit report** in writing.
- 85) The approval holder must notify the **department** within 5 **business days** of the date the **audit report** is published on the **website**. In this notification, the approval holder must provide the **department** with the web address for where the **audit report** is published on the **website**.
- 86) The approval holder must keep each **audit report** published on the **website** from the first date which that **audit report** must be published and until the expiry date of this approval.

COMPLETION OF THE ACTION

- 87) Within 20 **business days** after the **completion of the Action**, and, in any event, at least 20 **business days** prior to the expiry date of this approval, the approval holder must notify the **department** electronically of the date of **completion of the Action** and provide **completion data**. The approval holder must submit any spatial data that comprises **completion data** as a **shapefile**.
- 88) The approval holder must notify the **department** electronically at least 60, but not more than 70, **business days** prior to the expiry date of this approval, that the approval is due to expire.

Note: Section 145C of the **EPBC Act** entitles the approval holder to request an extension to the period of effect of this approval.

Part C – Definitions

Action area means the location of the Action, represented in Attachment C by the zone enclosed by the solid purple line and designated ‘The Project Site’.

Annual Compliance Report period or **ACR period** means each subsequent 12-month period following the date of this approval decision until the expiry date of this approval, unless otherwise specified in writing by the **Minister**.

Audit period means each subsequent three-year period following the **commencement of the Action** until the expiry date of this approval unless otherwise specified in writing by the **Minister**.

Audit report means a written report of an **independent audit**.

Biodiversity data means ‘biodiversity data’ as described in the *Policy on Accessing and Sharing Biodiversity Data*, Commonwealth of Australia 2024.

Bird and Bat Management Plan or **BBMP** means the Bird and Bat Management Plan prepared and approved in accordance with condition 25-36 of this approval.

Bird and bat utilisation surveys means surveys for **listed bird and bat species** that provide baseline data of utilisation for the assessment of the potential impacts of turbines, including data derived from fixed point counts across the impact and reference sites, on the presence of species, their relative abundance and patterns of activity in relation to the various habitat types.

Bridge means the bridge across Robbins Passage as described in the **DPEMP**.

Business day means a day that is not a Saturday, a Sunday or a public holiday in Northwest Tasmania.

Clear, cleared or clearing means the cutting down, felling, thinning, logging, removing, killing, destroying, poisoning, ringbarking, uprooting, or burning of vegetation.

Collision risk model or collision risk modelling means a mathematical model for quantifying the predicted risk of mortality and/or injury from turbine collision and barotrauma to **listed bird and bat species**.

Commence the Action or commences the Action means the first instance of any on-site **clearing, construction** or other physical activity associated with the Action, but does not include minor physical disturbance necessary to:

- undertake pre-commissioning and pre-clearance surveys or monitoring programs;
- install signage and/or temporary fencing to prevent unapproved use of the **Action area**, so long as the signage and/or temporary fencing is located where it does not **harm any protected matter**;
- protect environmental and property assets from fire, weeds, and feral animals, including use of existing surface access tracks; and
- install temporary site facilities for persons undertaking pre-commencement activities so long as these facilities are located where they do not **harm any protected matter**.

Commencement of the Action means the date on which the approval holder **commences the Action**.

Commissioning means the first date on which the blades of the first completed wind turbine start rotating and producing electricity.

Completion data means an environmental report and spatial data clearly detailing how the conditions of this approval have been met.

Completion of the Action means the date on which all activities associated with the approved Action, other than those which provide compensation for the impacts of the Action, have permanently ceased and/or been completed.

Compliance records means all documentation or other material in whatever form required to demonstrate compliance with these conditions of approval (including compliance with commitments made in **plans**) in the approval holder's possession, or that are within the approval holder's power to obtain lawfully.

Compliance report means a written report of compliance with, and fulfilment of, these conditions (including compliance with commitments made in **plans**).

Conservation advice/s means a conservation advice made or adopted by the **Minister** under the EPBC Act.

Construct or Construction means:

- the delivery and laydown of materials in the **Action area**;

- the erection of a building or structure that is, or is to be, fixed to the ground and wholly or partially fabricated on-site;
- the alteration, maintenance, repair or demolition of any building or structure;
- any work which involves breaking of the ground (including pile driving) or bulk earthworks;
- the laying of pipes and other prefabricated materials in the ground; and
- any associated excavation or assembly work.

Construction Environment Management Plan or **CEMP** means the Construction Environment Management Plan prepared and approved as required by condition CN2 of the **Tasmanian Approval**.

Decommissioning means the removal of all turbines and any associated infrastructure from within the **Action area**.

Department means the Australian Government agency responsible for administering the **EPBC Act**.

DFTD Prevention and Monitoring Program (DFTDPMP) means a structured and scientifically validated framework implemented by the approval holder to detect, monitor, and respond promptly to the potential arrival of Devil Facial Tumour Disease (DFTD).

DPEMP means the document *UPC Robbins Island Renewable Energy Park Development Proposal and Environmental Management Plan*, GHD, December 2021, or the latest subsequent version revised in accordance with these conditions.

Eagle management constraint period means the period commencing on 1 July and ending on 31 January in the same financial year, unless a shortened or lengthened period is determined (identified annually in November) and publicly advised in writing a month in advance by the **Forest Practices Authority**.

Environmental Management Plan Guidelines means the *Environmental Management Plan Guidelines*, Commonwealth of Australia 2024.

Environmental Offsets Policy means the *Environment Protection and Biodiversity Conservation Act 1999 Environmental Offsets Policy*, Commonwealth of Australia 2012.

EPBC Act means the *Environment Protection and Biodiversity Conservation Act 1999* (Cth).

Fauna Technical Note 1 means the *Fauna Technical Note 1: Eagle Nest Searching, Activity checking and Nest Management*, version 4.2, Forest Practices Authority Tasmania, April 2024.

Forest Practices Authority means the regulatory body, the Forest Practices Authority of Tasmania Australia, managing both public and private land, based on the *Forest Practices Act 1985*.

Full operation means the rotation of the blades of at least 51 assembled turbines.

Habitat features means parts of the environment (living or non-living) that provide **protected matters** with food and shelter and sites for nesting, migration and dispersal.

Harm means to cause any measurable direct or indirect disturbance or deleterious change as a result of any activity associated with the Action.

Incident means any:

- event which has the potential to, or does, **harm any protected matter**;
- potential non-compliance with these conditions, including the administrative requirements;
- actual non-compliance with these conditions, including the administrative requirements;
- potential non-compliance with one or more commitment made in a **plan**; and/or
- actual non-compliance with one or more commitment made in a **plan**.

Independent means a person or firm who does not have any individual, financial*, employment* or family affiliation or any conflicting interests with the Action, the approval holder or the approval holder's staff, representatives, or associated persons.

*Other than for the purpose of undertaking the role for which the person, or firm, is required.

Independent audit means an audit, conducted by an **independent auditor**, of compliance with and fulfilment of these conditions and the commitments made in **plans**, objectively evaluated against the audit criteria developed by the **independent auditor**, in accordance with the **Independent Audit and Audit Report Guidelines** to the extent that the **Independent Audit and Audit Report Guidelines** are consistent with these conditions.

Independent Audit and Audit Report Guidelines means the *Environment Protection and Biodiversity Conservation Act 1999 Independent Audit and Audit Report Guidelines*, Commonwealth of Australia 2019.

Independent auditor means a person, or firm, who:

- does not have any individual, financial*, employment* or family affiliation or any conflicting interests with the Action, the approval holder or the approval holder's staff, representatives, or associated persons;
- has demonstrated experience in undertaking government-regulated environmental compliance audits; and
- holds relevant professional qualifications and accreditations.

*Other than for the purpose of undertaking the role for which the person, or firm, is required.

listed bird and bat species means the **EPBC Act** listed threatened or migratory bird and bat species and includes the **Tasmanian Wedge-tailed Eagle** (*Aquila audax*), **Orange-bellied Parrot** (*Neophema chrysogaster*), **Swift Parrot** (*Lathamus discolor*), **Tasmanian Azure Kingfisher** (*Ceyx azureus diemenensis*), **Tasmanian Masked Owl** (*Tyto novaehollandiae castanops*), **Hooded Plover**

(Eastern) (*Thinornis rubricollis rubricollis* [syn. *T. cucullatus cucullatus*], Australian Fairy Tern (*Sternula nereis nereis*), Little Tern (*Sternula albifrons*), White-throated Needletail (*Hirundapus caudacutus*), Eastern Curlew (*Numenius madagascariensis*), Curlew Sandpiper (*Calidris ferruginea*), Great Knot (*Calidris tenuirostris*), Red Knot (*Calidris canutus*), Lesser Sand Plover (*Charadrius mongolus*), Greater Sand Plover (*Charadrius leschenaultia*), Bar-tailed Godwit (*Limosa lapponica*), Latham's Snipe (*Gallinago hardwickii*), Red-necked Sting (*Callidris ruficollis*), Ruddy Turnstone (*Arenaria interpres*), Sanderling (*Calidris alba*), Double-banded Plover (*Charadrius bicinctus*), Common Greenshank (*Tringa nebularia*), Pacific Golden Plover (*Pluvialis fulvai*), Grey Plover (*Pluvialis squatarola*), Sharp-tailed Sandpiper (*Calidris acuminata*), Whimbrel (*Numenius pheopus*), Grey-tailed Tattler (*Tringabrevipes*), Ruff (*Philomachus pugnax*), Littler Curlew (*Numenius minutus*), Common Sandpiper (*Actitis hypoleucos*), Terek Sandpiper (*Tringa cinereus*), and Pectoral Sandpiper (*Calidris melanotos*).

Microsite or micrositing means final siting adjustments during detailed design or construction for WTGs and associated infrastructure.

Minister means the Australian Government Minister administering the EPBC Act, including any delegate thereof.

Monitoring data means the data required to be recorded under the conditions of this approval, including sensitive biodiversity data.

New or increased impact means any direct or indirect increase in the impacts of an Action, an increase to the likelihood of an impact occurring, a reduction to the monitoring or mitigation measures for a protected matter, and/or a change to the nature or management of an environmental offset as outlined in the *Guidance on 'new or increased impact' relating to changes to approved management plans under EPBC Act environmental approvals*, Commonwealth of Australia 2017.

NRE Tasmanian Orange-bellied Parrot conservation program means the program run by the Department of Natural Resources and Environment Tasmania to protect, monitor and manage the Orange-bellied Parrot in Tasmania.

Offset outcomes means the offset outcomes specified in conditions 48 and 49.

Offset Site means the areas proposed and approved in writing by the Minister as an offset required under the conditions of this approval.

Onshore Wind Farm interim guidance means the draft document on the department website named *Onshore Wind Farm Guidance Best practice approaches when seeking approval under Australia's national environment law* (May 2024).

Operation means the period of time from commissioning to decommissioning.

Orange-bellied parrot means the EPBC Act listed threatened species Orange-bellied Parrot (*Neophema chrysogaster*).

Orange-bellied parrot habitat means areas which are important for roosting or foraging for the **Orange-bellied parrot**. Within the **Action area**, **Orange-bellied parrot habitat** is represented in Attachment D by: a) the zones shaded blue with a black 'z' pattern designated 'ASS – Succulent saline herbland', b) the zones shaded aquamarine with a diagonal black stripe pattern designated 'ARS – Saline sedgeland/rushland' and c) the zones shaded beige with a diagonal black stripe pattern designated 'NME – *Melaleuca ericifolia* Swamp Forest'.

Orange-bellied Parrot Mitigation Plan or **OBPMP** means the Orange-bellied Parrot Mitigation Plan prepared and approved in accordance with conditions 18 to 24 of this approval.

Plan means any action management plan or strategy that the approval holder is required by these conditions to implement.

Protected matter means a matter protected under a controlling provision in Part 3 of the **EPBC Act** for which this approval has effect.

Recovery plan means a plan for the purposes of the protection, conservation and management of a listed threatened species or a listed threatened ecological community, that has been made or adopted by the **Minister** under section 269A of the **EPBC Act**.

Risk profile means a classification of all turbines as low, medium, or high risk for causing collisions or barotrauma of **listed bird and bat species**, based on survey findings and **collision risk modelling**. High risk is assigned to turbines for which surveys or **collision risk modelling** have not been conducted.

Secure, secured or securement means to provide enduring conservation protection on the title of land under Section 34 of the *Tasmanian Nature Conservation Act 2002* (Tas), or another enduring protection mechanism agreed to in writing by the **department**, to provide protection for the site against development incompatible with conservation.

Sensitive biodiversity data means **biodiversity data** which, if released, published or otherwise exposed, may result in **harm** to the relevant **protected matter** as a result of the intentional or unintentional misuse of that **biodiversity data**.

Shapefile means location and attribute information about the Action provided in an Esri shapefile format containing:

- '.shp', '.shx', '.dbf' files;
- a '.prj' file which specifies the projection or geographic coordinate system used; and
- an '.xml' metadata file that describes the shapefile for discovery and identification purposes.

Site Specific Survey Methodology or **SSSM** means the Orange-bellied Parrot Site Specific Survey Methodology prepared and approved in accordance with conditions 16 and 17 of this approval.

SMART means specific, measurable, achievable, relevant and time bound.

Stage 1 means the part of the Action described as ‘Stage 1 Activities’ within section 2.3 of the **DPEMP** and as shown on the map at Attachment B.

Stage 2 means the part of the Action described as ‘Stage 2 Activities’ within section 2.3 of the **DPEMP** and as shown on the map at Attachment B.

Species characteristics means behaviour, flight and demographic factors (e.g. species presence [continuous/seasonal/transitory/migratory]), site use (e.g. foraging, roosting and breeding locations), flight paths (including migratory flight paths), flight height ranges and modes, flight behaviour (including soaring, flocking, timing (diurnal/nocturnal/dawn/dusk) and any association with wind speed, and population numbers resident in, or likely to pass through, the **Action area** and within 5 km of the **Action area**.

SPRAT means the Species Profile and Threats Database, Department of Climate Change, Energy, the Environment and Water, Commonwealth Government.

Suitably qualified independent ecologist means a person who has relevant professional qualifications as an ecologist and at least 3 years of work experience in that role. They must operate without influence from external interests, ensuring objective and credible ecological assessments. They must have demonstrated their capability in assessing ecological conditions, designing and implementing surveys for the relevant **protected matters**, and designing and implementing conservation measures as required for the relevant **protected matters**. They should be able to give an authoritative assessment and advice on the presence of the relevant **protected matters** using relevant protocols, standards, methods and/or literature.

Suitably qualified statistician (for the purpose of conducting statistical analyses related to environmental monitoring) refers to an individual with relevant professional qualifications and a minimum of 3 years of experience in designing and implementing statistical methodologies. This person can provide authoritative assessments and advice on data analysis, interpretation, and application using established protocols, standards, methods, and/or literature to ensure reliable and accurate outcomes.

Survey guidelines for Australia’s threatened birds means the *Survey guidelines for Australia’s threatened birds - Guidelines for detecting birds listed as threatened under the Environment Protection and Biodiversity Conservation Act 1999*, Commonwealth of Australia 2010.

Tasmanian Approval means the Permit Part B conditions – environmental No. 9786 pursuant to the Tasmanian Civil and Administrative Tribunal decision dated 2 January 2024.

Tasmanian Devil means the **EPBC Act** listed threatened species Tasmanian devil (*Sarcophilus harrisii*).

Tasmanian Devil Offset Area Management Plan or **OAMP** means the document titled ‘EPBC2017/8096 Robbins Island Wind Tasmanian Devil Preliminary Offset Area Management Plan’, dated 12 August 2024, GHD, or the latest subsequent version approved by the **Minister** in writing.

Tasmanian Devil Offset Strategy means the 'EPBC2017/8096 Robbins Island Wind Tasmanian Devil Offset Strategy', dated 07 August 2024, GHP, or a subsequently revised version approved by the **Minister** in writing.

Tasmanian Devil Optimal Breeding Habitat means areas which are optimal for breeding for the **Tasmanian devil**. Within the **Action area**, Tasmanian devil optimal breeding habitat is represented in Attachment A by the zones shaded dark green designated 'Optimal Denning Habitat'.

Tasmanian Devil Foraging and Dispersal Habitat means areas where the **Tasmanian devil** can forage and disperse. Within the **Action area**, Tasmanian devil foraging and dispersal habitat is represented in Attachment A by the zones shaded light orange designated 'Foraging and Dispersal Habitat'.

Tasmanian Devil Sub-Optimal Breeding Habitat means areas which are sub-optimal for breeding for the **Tasmanian devil**. Within the **Action area**, Tasmanian devil sub-optimal breeding habitat is represented in Attachment A by the zones shaded light green designated 'Sub-Optimal Denning Habitat'.

Tasmanian Wedge-tailed Eagle means the **EPBC Act** listed threatened species Tasmanian wedge-tailed eagle (*Aquila audax fleayi*).

Typical occurrences means occurrences of seasons in which, at the **Action area**, the mean temperature, rainfall and wind direction and strength are all within 30% of the 20-year long term mean for each parameter in those seasons in the **Action area**.

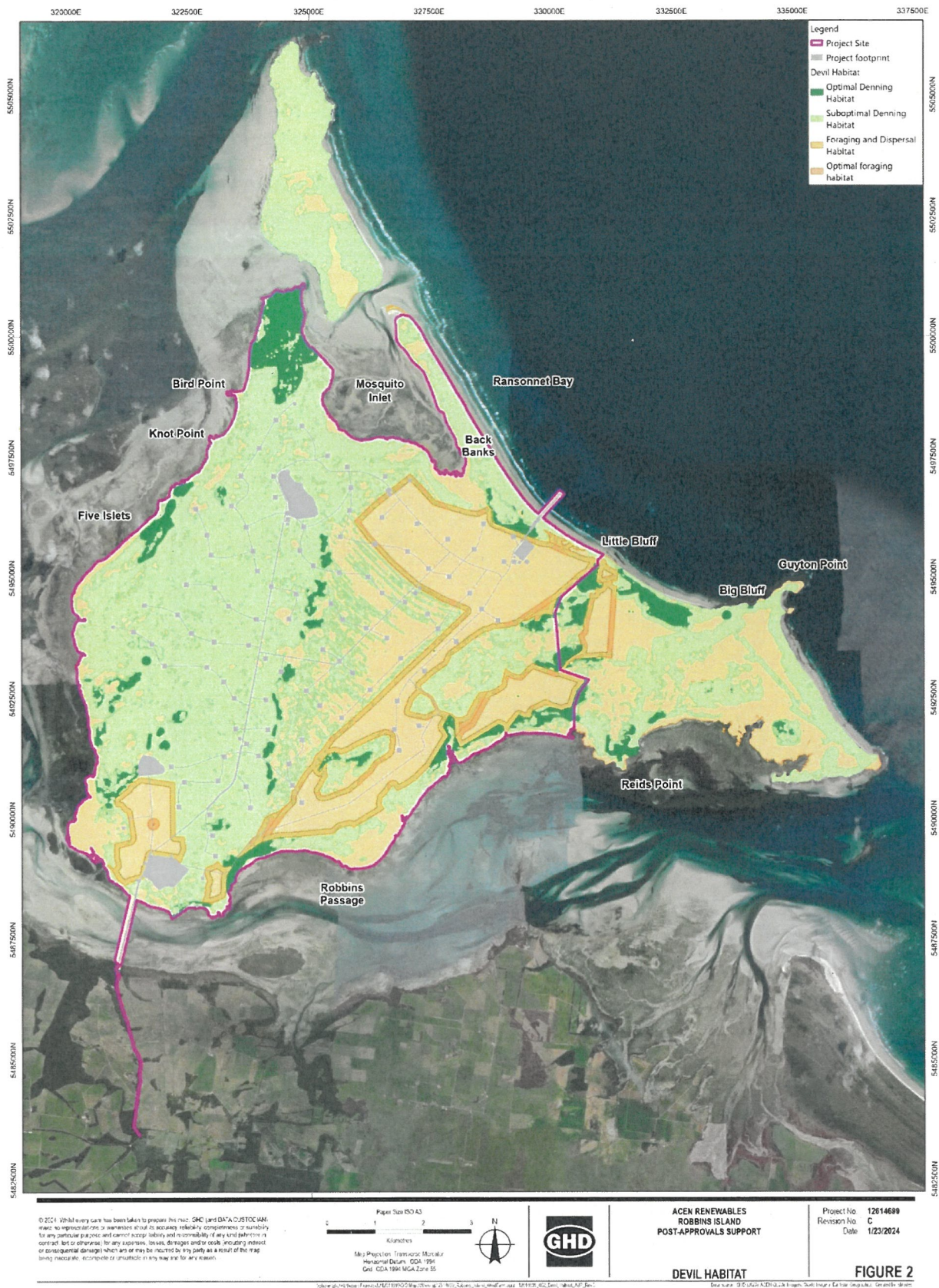
Website means a set of related web pages located under a single domain name attributed to the approval holder and available to the public.

WTG/WTGs means wind turbine generator or wind turbine generators.

Attachments


- A: Tasmanian Devil Habitat Map
- B: WTG Developing Staging Map
- C: Construction Site Plan (Action Area)
- D: Orange-bellied Parrot Habitat

Tasmanian Devil Habitat Map (A)



WTG Development Staging Map (B)





UPC Robb's Island Pty Ltd

Robb's Island Renewable Energy Park

DPEMP

WTG Development Staging

Plan (Robb's Island)

Job Number

32-1855601

Revision

A

Date

29 Jun 2021

Figure 2.4

2 Sharnbrook Square, Hobart Tasmania 7000 Australia T 61 3 6210 0600 E thomas@chd.com W www.chd.com

CHD is a registered provider of environmental services. The information contained in this document is confidential and intended for the use of the client only. It is not to be distributed to the public or used for any other purpose without the written consent of CHD. The information contained in this document is not to be used for any other purpose without the written consent of CHD. The information contained in this document is not to be used for any other purpose without the written consent of CHD.

Construction Site Plan (Action Area) (C)



1:70,000 @ A3

0 0.5 1 1.5 2

KILOMETRES

Map Projection: Transverse Mercator
Datum: GDA 1984
Zone: 55

The Project Site

- WTG Served
- Metmast
- 1: 220kV underground cable (inductively coupled)
- 2: 220kV underground cable (inductively coupled)
- 3: 220kV underground cable (inductively coupled)
- 4: 220kV underground cable (inductively coupled)
- 5: 220kV underground cable (inductively coupled)
- 6: 220kV underground cable (inductively coupled)
- 7: 220kV underground cable (inductively coupled)
- 8: 220kV underground cable (inductively coupled)
- 9: 220kV underground cable (inductively coupled)
- 10: 220kV underground cable (inductively coupled)
- 11: 220kV underground cable (inductively coupled)
- 12: 220kV underground cable (inductively coupled)
- 13: 220kV underground cable (inductively coupled)
- 14: 220kV underground cable (inductively coupled)
- 15: 220kV underground cable (inductively coupled)
- 16: 220kV underground cable (inductively coupled)
- 17: 220kV underground cable (inductively coupled)
- 18: 220kV underground cable (inductively coupled)
- 19: 220kV underground cable (inductively coupled)
- 20: 220kV underground cable (inductively coupled)
- 21: 220kV underground cable (inductively coupled)
- 22: 220kV underground cable (inductively coupled)
- 23: 220kV underground cable (inductively coupled)
- 24: 220kV underground cable (inductively coupled)
- 25: 220kV underground cable (inductively coupled)
- 26: 220kV underground cable (inductively coupled)
- 27: 220kV underground cable (inductively coupled)
- 28: 220kV underground cable (inductively coupled)
- 29: 220kV underground cable (inductively coupled)
- 30: 220kV underground cable (inductively coupled)
- 31: 220kV underground cable (inductively coupled)
- 32: 220kV underground cable (inductively coupled)
- 33: 220kV underground cable (inductively coupled)
- 34: 220kV underground cable (inductively coupled)
- 35: 220kV underground cable (inductively coupled)
- 36: 220kV underground cable (inductively coupled)
- 37: 220kV underground cable (inductively coupled)
- 38: 220kV underground cable (inductively coupled)
- 39: 220kV underground cable (inductively coupled)
- 40: 220kV underground cable (inductively coupled)
- 41: 220kV underground cable (inductively coupled)
- 42: 220kV underground cable (inductively coupled)
- 43: 220kV underground cable (inductively coupled)
- 44: 220kV underground cable (inductively coupled)
- 45: 220kV underground cable (inductively coupled)
- 46: 220kV underground cable (inductively coupled)
- 47: 220kV underground cable (inductively coupled)
- 48: 220kV underground cable (inductively coupled)
- 49: 220kV underground cable (inductively coupled)
- 50: 220kV underground cable (inductively coupled)
- 51: 220kV underground cable (inductively coupled)
- 52: 220kV underground cable (inductively coupled)
- 53: 220kV underground cable (inductively coupled)
- 54: 220kV underground cable (inductively coupled)
- 55: 220kV underground cable (inductively coupled)
- 56: 220kV underground cable (inductively coupled)
- 57: 220kV underground cable (inductively coupled)
- 58: 220kV underground cable (inductively coupled)
- 59: 220kV underground cable (inductively coupled)
- 60: 220kV underground cable (inductively coupled)
- 61: 220kV underground cable (inductively coupled)
- 62: 220kV underground cable (inductively coupled)
- 63: 220kV underground cable (inductively coupled)
- 64: 220kV underground cable (inductively coupled)
- 65: 220kV underground cable (inductively coupled)
- 66: 220kV underground cable (inductively coupled)
- 67: 220kV underground cable (inductively coupled)
- 68: 220kV underground cable (inductively coupled)
- 69: 220kV underground cable (inductively coupled)
- 70: 220kV underground cable (inductively coupled)
- 71: 220kV underground cable (inductively coupled)
- 72: 220kV underground cable (inductively coupled)
- 73: 220kV underground cable (inductively coupled)
- 74: 220kV underground cable (inductively coupled)
- 75: 220kV underground cable (inductively coupled)
- 76: 220kV underground cable (inductively coupled)
- 77: 220kV underground cable (inductively coupled)
- 78: 220kV underground cable (inductively coupled)
- 79: 220kV underground cable (inductively coupled)
- 80: 220kV underground cable (inductively coupled)
- 81: 220kV underground cable (inductively coupled)
- 82: 220kV underground cable (inductively coupled)
- 83: 220kV underground cable (inductively coupled)
- 84: 220kV underground cable (inductively coupled)
- 85: 220kV underground cable (inductively coupled)
- 86: 220kV underground cable (inductively coupled)
- 87: 220kV underground cable (inductively coupled)
- 88: 220kV underground cable (inductively coupled)
- 89: 220kV underground cable (inductively coupled)
- 90: 220kV underground cable (inductively coupled)
- 91: 220kV underground cable (inductively coupled)
- 92: 220kV underground cable (inductively coupled)
- 93: 220kV underground cable (inductively coupled)
- 94: 220kV underground cable (inductively coupled)
- 95: 220kV underground cable (inductively coupled)
- 96: 220kV underground cable (inductively coupled)
- 97: 220kV underground cable (inductively coupled)
- 98: 220kV underground cable (inductively coupled)
- 99: 220kV underground cable (inductively coupled)
- 100: 220kV underground cable (inductively coupled)

Construction and Services Facility (CAF)

- CAF Building (CAF)
- CAF Storage (CAF)
- CAF Workshop (CAF)
- CAF Office (CAF)
- CAF Kitchen (CAF)
- CAF Bathroom (CAF)
- CAF Shower (CAF)
- CAF Laundry (CAF)
- CAF Storage (CAF)
- CAF Workshop (CAF)
- CAF Office (CAF)
- CAF Kitchen (CAF)
- CAF Bathroom (CAF)
- CAF Shower (CAF)
- CAF Laundry (CAF)

Infrastructure and Services Facility (ISF)

- ISF Building (ISF)
- ISF Storage (ISF)
- ISF Workshop (ISF)
- ISF Office (ISF)
- ISF Kitchen (ISF)
- ISF Bathroom (ISF)
- ISF Shower (ISF)
- ISF Laundry (ISF)

Water and Sewerage Facility (WSF)

- WSF Building (WSF)
- WSF Storage (WSF)
- WSF Workshop (WSF)
- WSF Office (WSF)
- WSF Kitchen (WSF)
- WSF Bathroom (WSF)
- WSF Shower (WSF)
- WSF Laundry (WSF)

Power and Telecommunications Facility (PTF)

- PTF Building (PTF)
- PTF Storage (PTF)
- PTF Workshop (PTF)
- PTF Office (PTF)
- PTF Kitchen (PTF)
- PTF Bathroom (PTF)
- PTF Shower (PTF)
- PTF Laundry (PTF)

Other Facilities

- Other Building (Other)
- Other Storage (Other)
- Other Workshop (Other)
- Other Office (Other)
- Other Kitchen (Other)
- Other Bathroom (Other)
- Other Shower (Other)
- Other Laundry (Other)

UPC Robbins Island Pty Ltd
Robbins Island Renewable Energy Park
DPEMP
Conceptual Construction
Site Plan (Robbins Island)

Job Number 32-1855801
Revision 1
Date 07 Jun 2021

25 Narrastra Square, Hobart Tasmania 7000 Australia T 61 3 9270 0800 E h.narrastra@ghd.com W www.ghd.com

Figure 2.5

